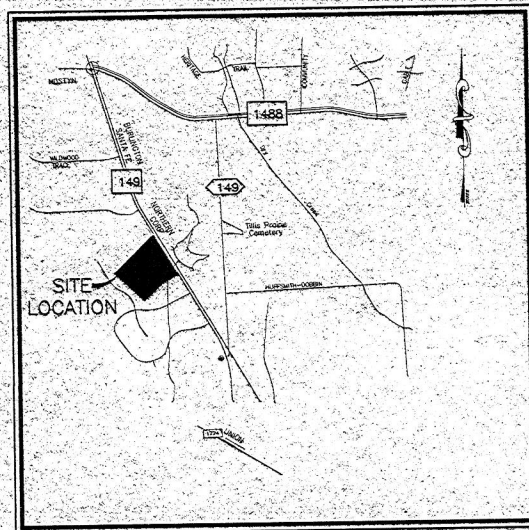


COLIN JAMES CUSTOM HOMES CONSTRUCTION PLANS FOR FALLS OF WILDWOOD PAVING, GRADING, DRAINAGE and WATER MONTGOMERY COUNTY, TEXAS



VICINITY MAP
KEY MAP NO 213K+P
NTS

SHEET INDEX

C-1	COVER SHEET
C-2	OVERALL SITE & DRAINAGE PLAN
C-3,4,5	NORTH STREET PLAN & PROFILE
C-6,7	EAST STREET PLAN & PROFILE
C-8,9	SOUTH STREET PLAN & PROFILE
C-10	DETENTION BASIN, PONDS & LAKES
C-11,12	DITON PLAN & PROFILES
C-13	CONSTRUCTION NOTES & DETAILS
C-14	TRENCH SAFETY SHEET
C-15	EROSION CONTROL PLAN

Mark J. Mooney 6/1/00
APPROVED BY: MONTGOMERY COUNTY ENGINEER
MARK J. MOONEY

Sitech ENGINEERING CORP.

"The Site Technology Group"

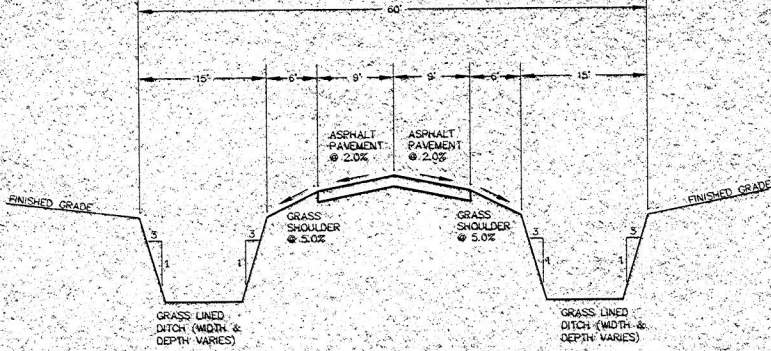
1544 SAWDUST ROAD, SUITE 100
THE WOODLANDS, TEXAS 77380

OFF. # (281) 363-4039 FAX # (281) 363-3459
e-mail: seo@sitecheng.com

© COPYRIGHT 2000



John R. ...
JOB # 1309-001 SHEET NO 2



TYPICAL ROW CROSS-SECTION

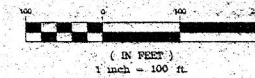
N.T.S.

LOT REQUIREMENTS

LOT NUMBER	FINISHED FLOOR ELEVATION	RCP CULVERT SIZE * (18" MIN. UNLESS NOTED)
1	218.00	
2	220.00	
3	221.00	
4	222.00	24" N OF CROSS CULVERT
5	222.00	1'-24"
6	224.00	1'-24"
7	223.50	
8	223.50	
9	221.00	
10	216.50	
11	215.00	
12	216.50	
13	215.50	
14	217.00	
15	216.00	
16	217.00	
17	219.00	2'-18"
18	219.00	2'-18"
19	220.00	2'-18"
20	221.00	
21	220.00	1'-24" ON NORTH ROAD

* MULTIPLE 3'-12" OR 2'-15" CAN BE SUBSTITUTED AS NEEDED.

GRAPHIC SCALE

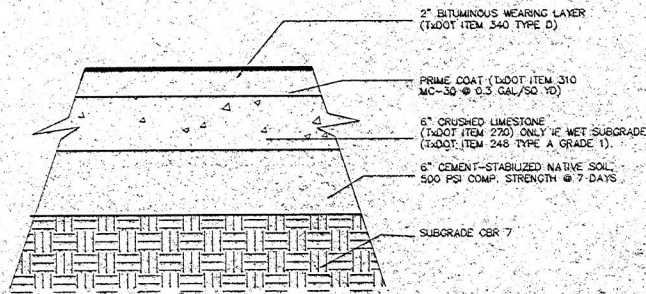
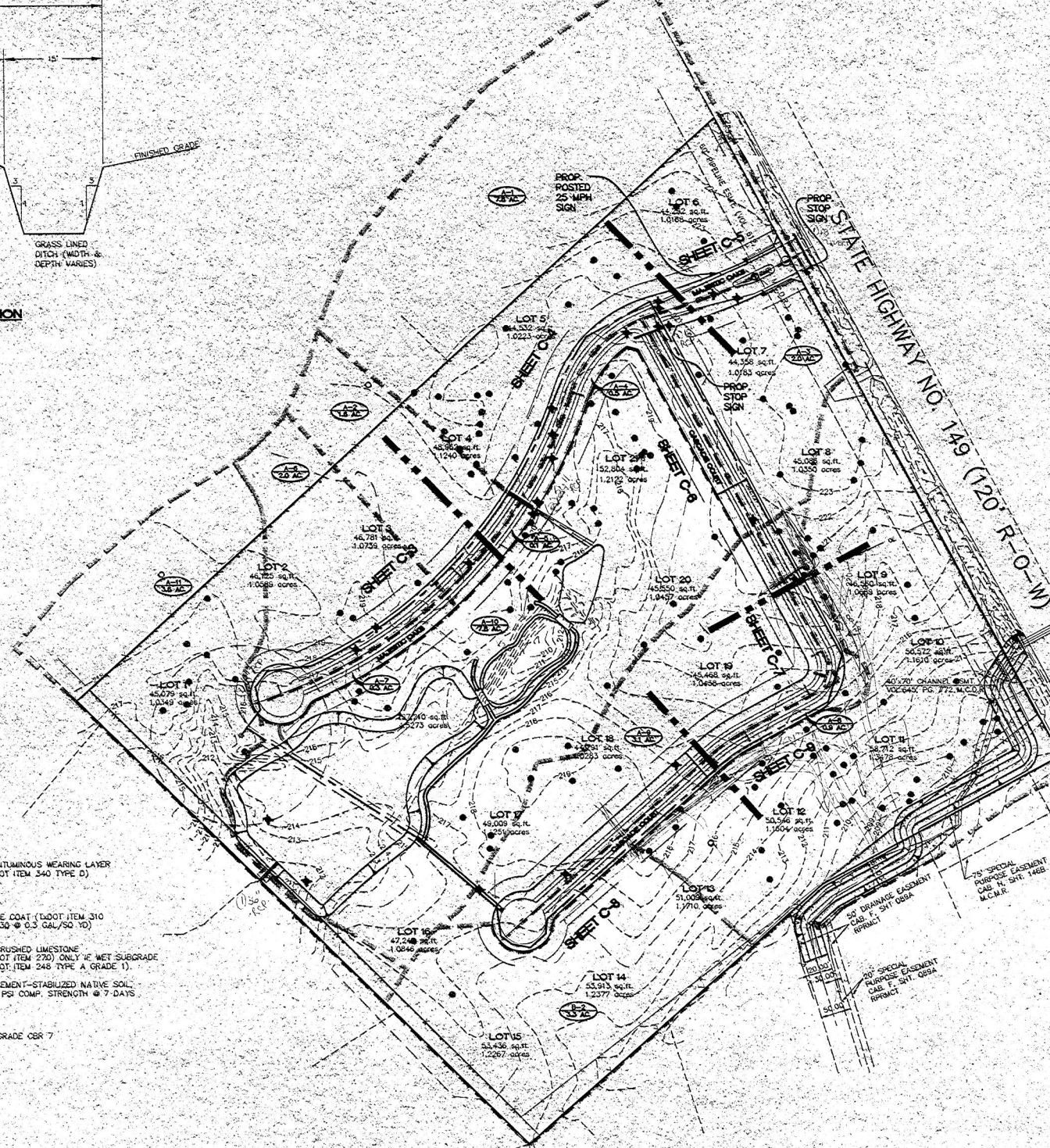
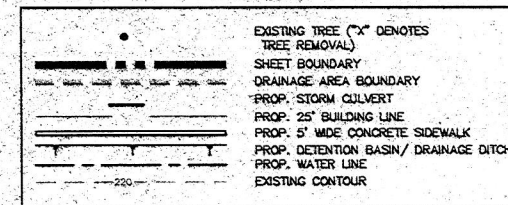


FMMA BENCHMARK:

RM755 - CHISELED SQUARE ON TOP OF CONCRETE HEADWALL LOCATED ON THE WEST SIDE OF STATE HIGHWAY NO. 149. ELEVATION = 213.84

SEE DRAINAGE REPORT FOR DETAILS OF DRAINAGE AREA B-1

LEGEND



ASPHALT PAVEMENT DETAIL

N.T.S.

APPROVED BY: MONTGOMERY COUNTY ENGINEER
 MARK J. MOONEY

NO.	DATE	BY

COLIN JAMES CUSTOM HOMES

FALLS OF WILDWOOD

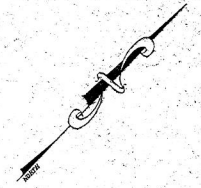
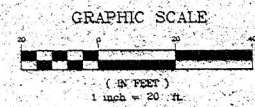
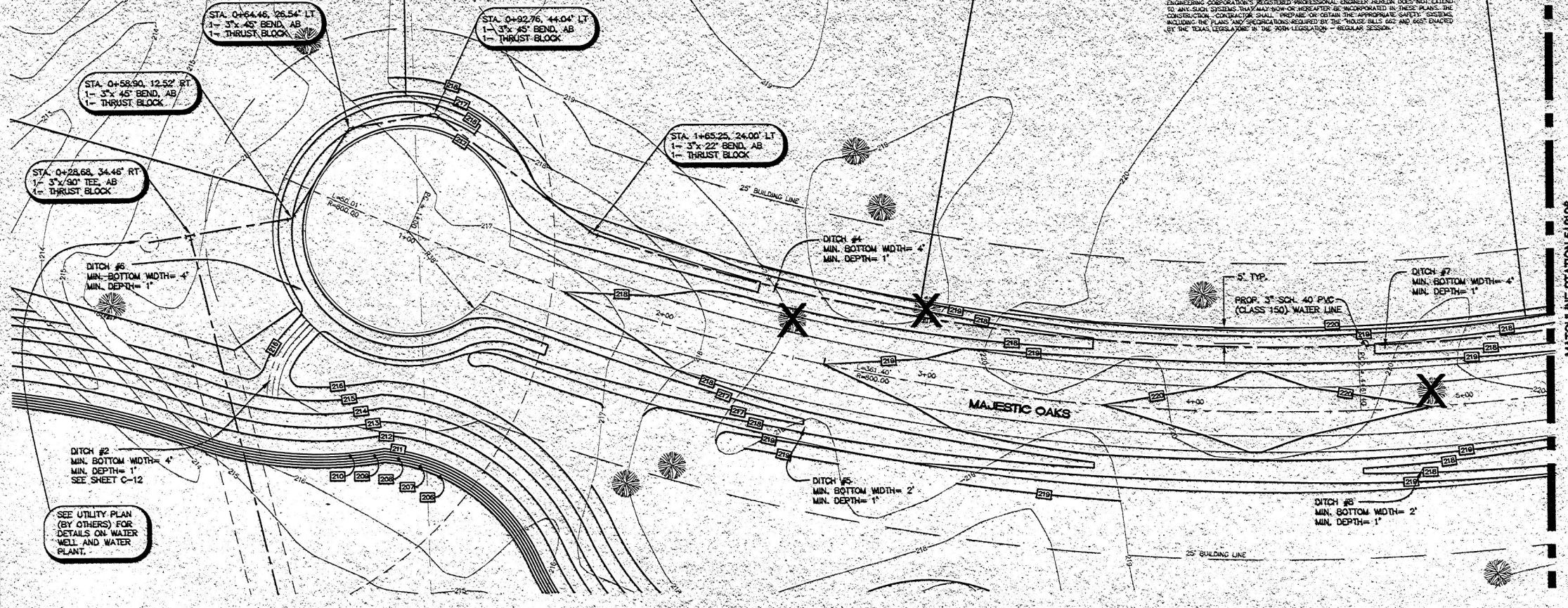
OVERALL SITE & DRAINAGE PLAN
 MONTGOMERY COUNTY, TEXAS

Stitch ENGINEERING CORP.
 "The Site Technology Group"
 1044 SANDLUST ROAD, SUITE 100
 THE WOODLANDS, TEXAS 77380
 OFF # (281) 363-4335 FAX # (281) 363-3466
 e-mail: stitch@stitcheng.com
 © COPYRIGHT 2000

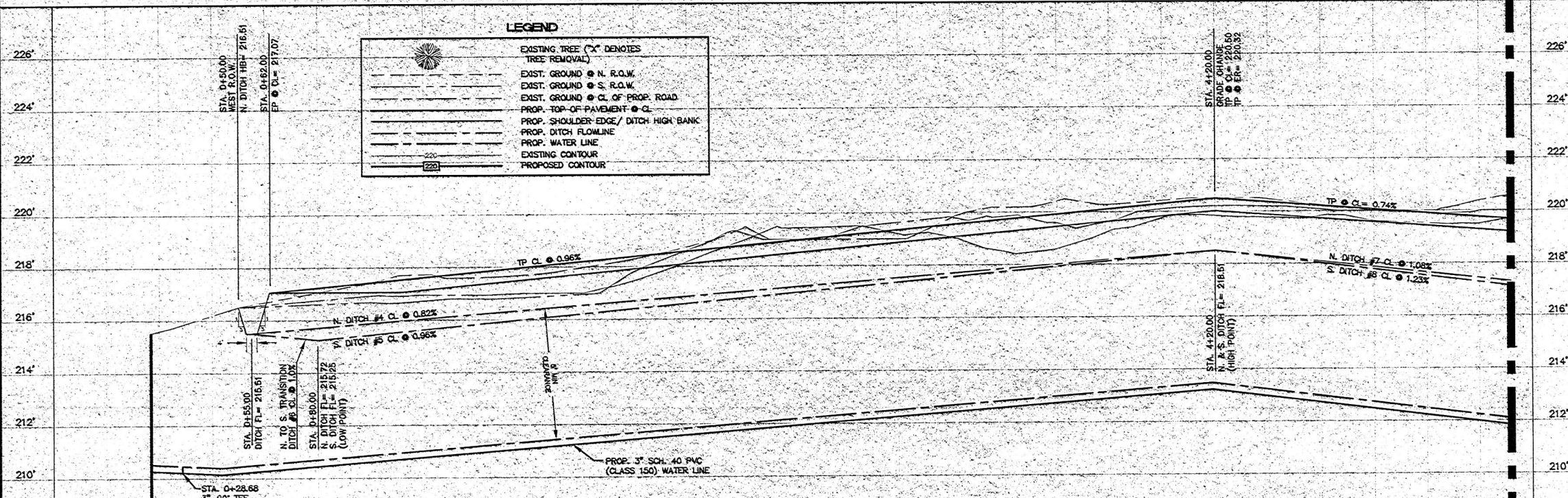
DRAWN: SSD CHECKED: SSD DATE: 06/00
 PROJECT NO.: 1300-001 DWG NAME: OVERALL.DWG
 SCALE: HORIZ: 1" = 100'
 SURVEY: GEOMATICS VERT: N/A

NOTE: THESE PLANS, PREPARED BY STITCH ENGINEERING CORPORATION, DO NOT EXTEND TO OR INCLUDE DESIGN OR SYSTEMS PERTAINING TO THE SAFETY OF THE CONTRACTOR OR ITS EMPLOYEES, AGENTS, OR REPRESENTATIVES IN THE PERFORMANCE OF THE WORK. THE SEAL OF THE STITCH ENGINEERING CORPORATION'S REGISTERED PROFESSIONAL ENGINEER HEREON DOES NOT EXTEND TO ANY SUCH SYSTEMS THAT MAY NOW OR HEREAFTER BE INCORPORATED IN THESE PLANS. THE

THE ENGINEER'S SEAL AND THE PERFORMANCE OF THE WORK, THE SEAL OF THE SITE ENGINEER OR REPRESENTATIVE OF THE REGISTERED PROFESSIONAL ENGINEER, ARCHITECT, DOES NOT EXTEND TO ANY SUCH SYSTEMS THAT MAY NOW OR HEREAFTER BE INCORPORATED IN THESE PLANS. THE CONSTRUCTION CONTRACTOR SHALL PREPARE OR OBTAIN THE APPROPRIATE SAFETY SYSTEMS INCLUDING THE PLANS AND OPERATIONS REQUIRED BY THE TEXAS RULES, 65C AND 66B ENACTED BY THE TEXAS LEGISLATURE IN THE 70TH LEGISLATURE - REGULAR SESSION.



MATCH LINE STATION 6+31.96
SEE SHEET C-4



LEGEND

	EXISTING TREE ("X" DENOTES TREE REMOVAL)
	EXIST. GROUND @ N. R.O.W.
	EXIST. GROUND @ S. R.O.W.
	EXIST. GROUND @ CL OF PROP. ROAD
	PROP. TOP-OF-PAVEMENT @ CL
	PROP. SHOULDER EDGE / DITCH HIGH BANK
	PROP. DITCH FLOWLINE
	PROP. WATER LINE
	EXISTING CONTOUR
	PROPOSED CONTOUR

APPROVED BY: MONTGOMERY COUNTY ENGINEER
MARK J. MOONEY

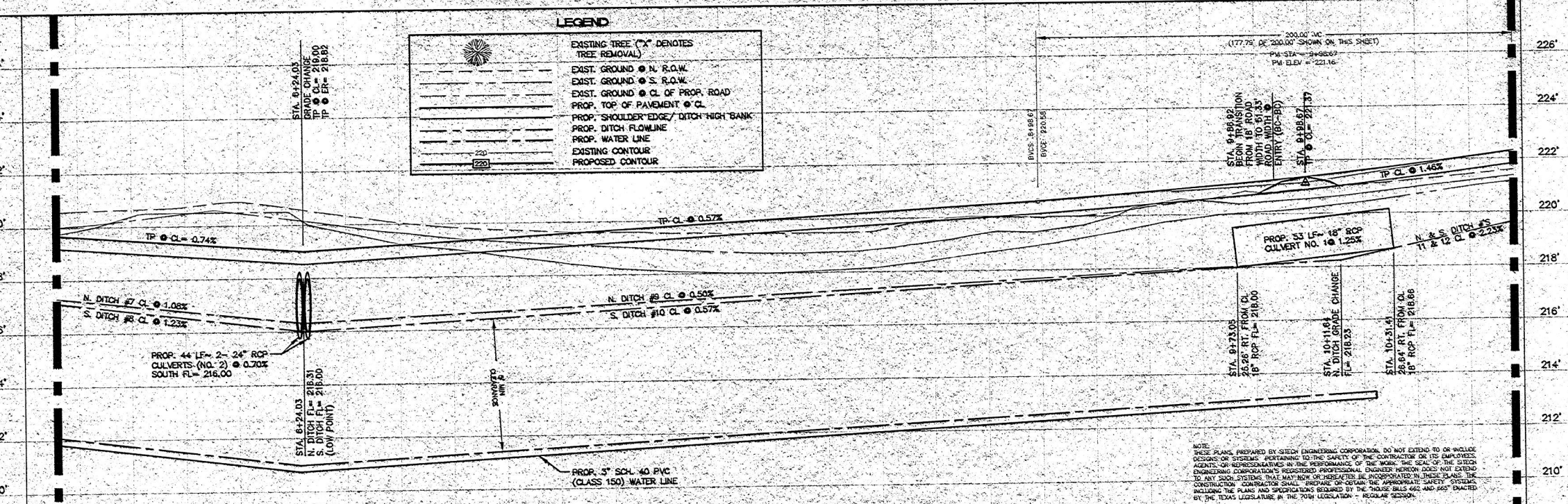
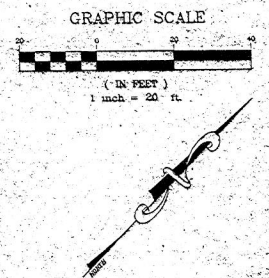
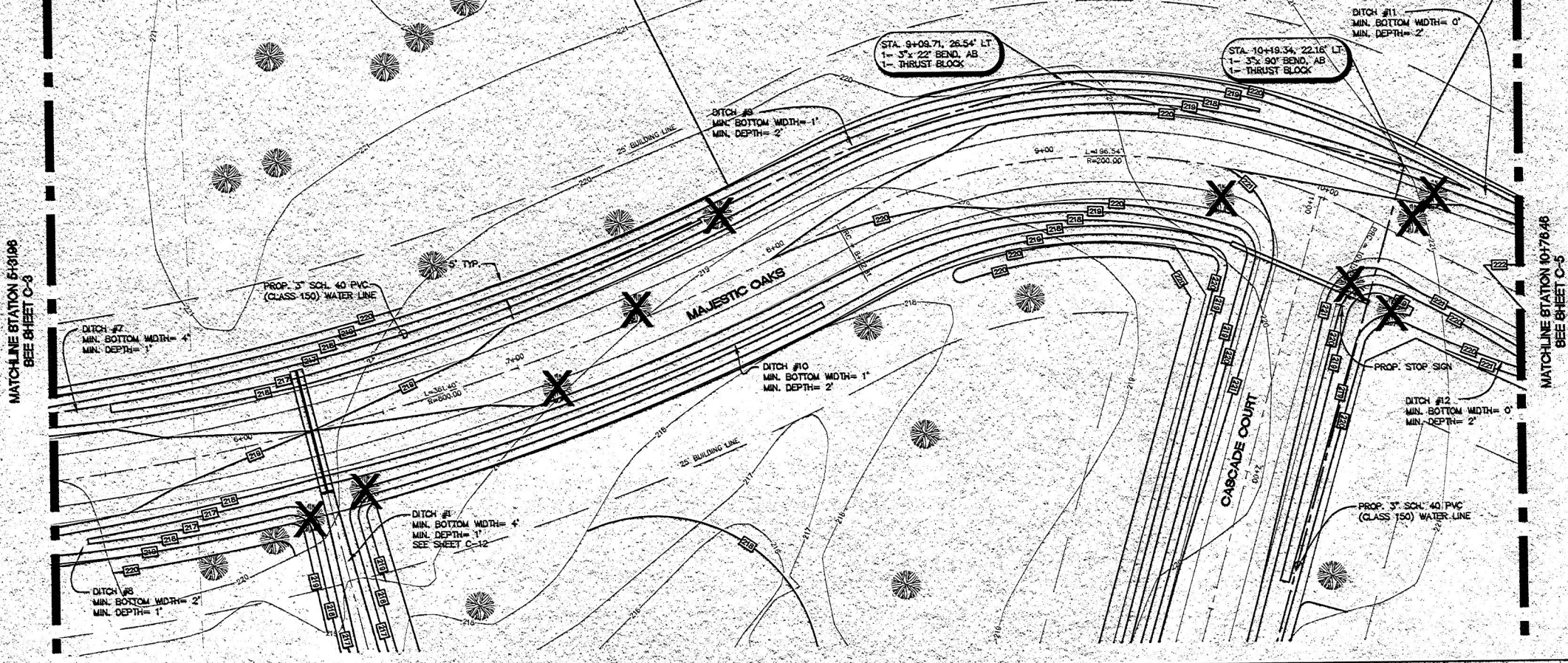
NO.	DATE	BY



COLIN JAMES CUSTOM HOMES
FALLS OF WILDWOOD
MAJESTIC OAKS
STA 0+00.00 TO 5+31.96
MONTGOMERY COUNTY, TEXAS

Sitech ENGINEERING CORP.
The Site Technology Group
1544 SANDOZ ROAD, SUITE 100
THE WOODLANDS, TEXAS 77360
OFF. # (281) 363-4038 FAX # (281) 363-3458
e-mail: seec@sitechgroup.com
© COPYRIGHT 2000

DATE: 05/2000 HORIZ. SCALE: 1" = 20'
SURVEY: GEOMATICS VERT. SCALE: 1" = 2'



LEGEND

	EXISTING TREE ("X" DENOTES TREE REMOVAL)
	EXIST. GROUND @ N. R.O.W.
	EXIST. GROUND @ S. R.O.W.
	EXIST. GROUND @ CL. OF PROP. ROAD
	PROP. TOP OF PAVEMENT @ CL.
	PROP. SHOULDER EDGE / DITCH HIGH BANK
	PROP. DITCH FLOWLINE
	PROP. WATER LINE
	EXISTING CONTOUR
	PROPOSED CONTOUR

APPROVED BY: MONTGOMERY COUNTY ENGINEER
MARK J. MOONEY

NO.	DATE	BY

COLIN JAMES CUSTOM HOMES
FALLS OF WILDWOOD

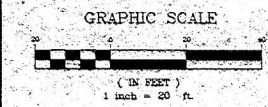
MAJESTIC OAKS
STA 5+31.96 TO 10+76.46
MONTGOMERY COUNTY, TEXAS

Sitech ENGINEERING CORP.
"The Site Technology Group"
1544 SANDUST ROAD, SUITE 100
THE WOODLANDS, TEXAS 77380
OFF: (281) 365-4039 FAX: (281) 363-3459
e-mail: sitech@sitech.com
© copyright 2000

NOTE: THESE PLANS, PREPARED BY SITECH ENGINEERING CORPORATION, DO NOT EXTEND TO OR INCLUDE DESIGN OR SYSTEMS PERTAINING TO THE SAFETY OF THE CONTRACTOR OR ITS EMPLOYEES, AGENTS OR REPRESENTATIVES IN THE PERFORMANCE OF THE WORK. THE SAFETY OF THE SYSTEM ENGINEERING CORPORATION'S REGISTERED PROFESSIONAL ENGINEER HEREON DOES NOT EXTEND TO ANY SUCH SYSTEMS THAT MAY NOW OR HEREAFTER BE INCORPORATED IN THESE PLANS. THE CONTRACTOR SHALL BE RESPONSIBLE FOR OBTAINING THE APPROPRIATE SAFETY SYSTEMS INCLUDING THE PLANS AND SPECIFICATIONS REQUIRED BY THE "HOUSE BILLS 462 AND 463" DRAFTED BY THE TEXAS LEGISLATURE IN THE 76TH LEGISLATIVE REGULAR SESSION.

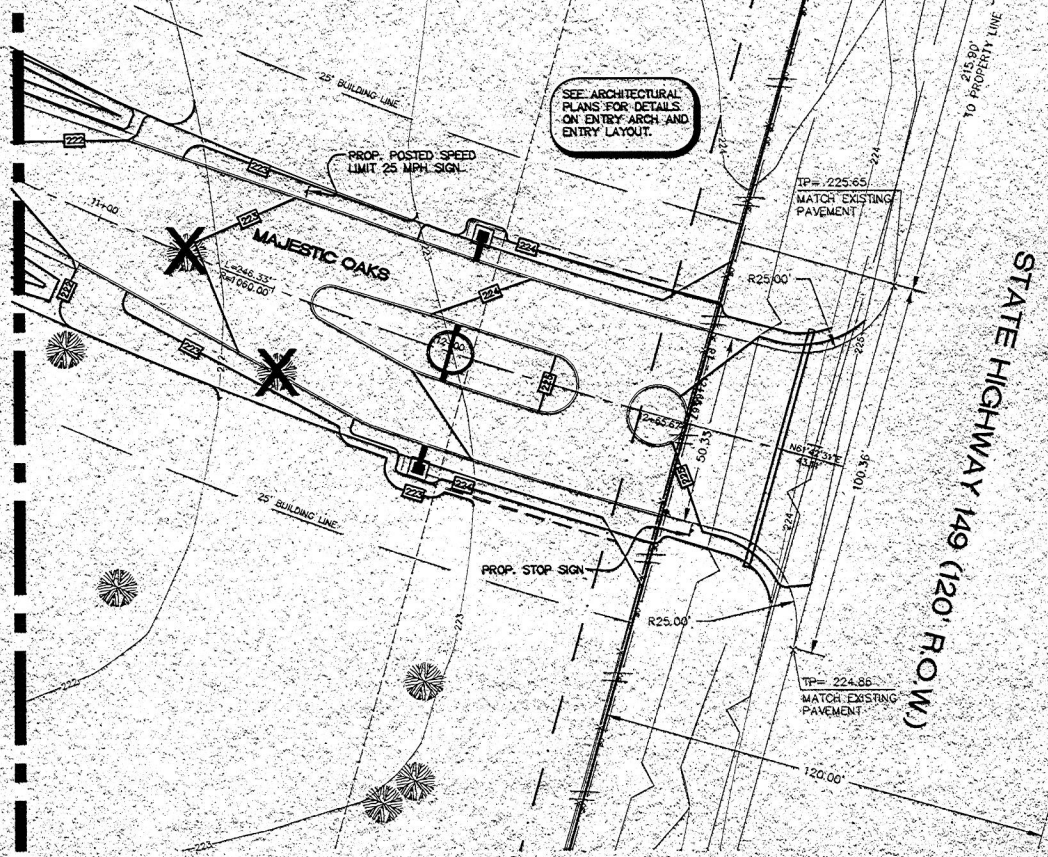
VERTICAL CURVE NO. 1

Project:	Falls of Wildwood			
Job#:	1900-001			
Design Criteria:	Montgomery County			
By:	JD	Date:	6/19/00	
Checked By:	BP	Date:	6/19/00	
VC #1	Slope In (g1)	Slope Out (g2)	Length	Rate of Change r=(g2-g1)/L
	0.0057	0.0146	200	0.000445
$y = 0.5r(x^2) + g1(x) + BV_{Elev}$				
Station	x	(r/2)(x^2)	g1(x)	Elevation
898.67	0	0.0000	0.00	220.58
908.67	10	0.0022	0.06	220.64
918.67	20	0.0089	0.11	220.70
928.67	30	0.0200	0.17	220.77
938.67	40	0.0356	0.23	220.84
948.67	50	0.0556	0.29	220.92
958.67	60	0.0801	0.34	221.00
968.67	70	0.1090	0.40	221.08
978.67	80	0.1424	0.46	221.18
988.67	90	0.1802	0.51	221.27
998.67	100	0.2225	0.57	221.37
1008.67	110	0.2692	0.63	221.48
1018.67	120	0.3204	0.68	221.58
1028.67	130	0.3760	0.74	221.70
1038.67	140	0.4361	0.80	221.81
1048.67	150	0.5006	0.86	221.94
1058.67	160	0.5696	0.91	222.06
1068.67	170	0.6430	0.97	222.19
1078.67	180	0.7209	1.03	222.33
1088.67	190	0.8032	1.08	222.47
1098.67	200	0.8900	1.14	222.61



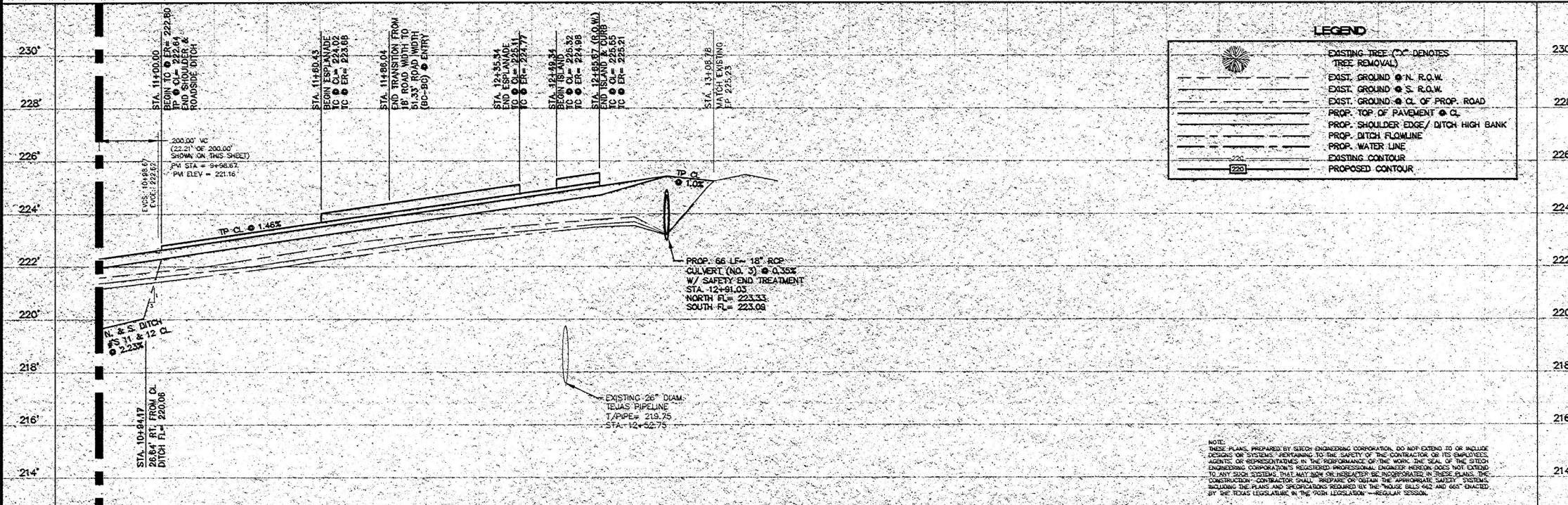
CONCRETE HEADWALL LOCATED ON THE WEST SIDE OF STATE HIGHWAY NO. 149. ELEVATION = 213.84.

MATCHLINE STATION 10+76.46 SEE SHEET C-4



SEE ARCHITECTURAL PLANS FOR DETAILS ON ENTRY ARCH. AND ENTRY LAYOUT

STATE HIGHWAY 149 (120' ROW)



LEGEND

	EXISTING TREE (X) DENOTES TREE REMOVAL
	EXIST. GROUND @ N. R.O.W.
	EXIST. GROUND @ S. R.O.W.
	EXIST. GROUND @ CL OF PROP. ROAD
	PROP. TOP OF PAVEMENT @ CL
	PROP. SHOULDER EDGE/ DITCH HIGH BANK
	PROP. DITCH FLOWLINE
	PROP. WATER LINE
	EXISTING CONTOUR
	PROPOSED CONTOUR

APPROVED BY: MONTGOMERY COUNTY ENGINEER
MARK L. MOONEY

NO.	DATE	BY



COLIN JAMES CUSTOM HOMES

FALLS OF WILDWOOD
MAJESTIC OAKS
STA 10+76.46 TO 13+08.78
MONTGOMERY COUNTY, TEXAS

Sitech ENGINEERING CORP.
"The Site Technology Group"
1544 SAWDUST ROAD, SUITE 100
THE WOODLANDS, TEXAS 77380
OFF. # (281) 363-6000 FAX # (281) 363-3459
e-mail: sgc@sittech.com
© COPYRIGHT 2000

NOTE: THESE PLANS, PREPARED BY SITTECH ENGINEERING CORPORATION, DO NOT EXTEND TO OR INCLUDE DESIGN OR SYSTEMS MAINTENANCE TO THE SAFETY OF THE CONTRACTOR OR ITS EMPLOYEES, AGENTS OR REPRESENTATIVES IN THE PERFORMANCE OF THE WORK. THE SEAL OF THE SITTECH ENGINEERING CORPORATION'S REGISTERED PROFESSIONAL ENGINEER PERSON DOES NOT EXTEND TO ANY SUCH SYSTEMS. THEY MAY NOT BE OR BE INTERPRETED AS SUCH. IN THESE PLANS, THE CONSTRUCTION CONTRACTOR SHALL PREPARE OR OBTAIN THE APPROPRIATE SAFETY SYSTEMS INCLUDING THE PLANS AND SPECIFICATIONS REQUIRED BY THE HOUSING BILLS AND ACTS ENACTED BY THE TEXAS LEGISLATURE IN THE 70TH LEGISLATION - REGULAR SESSION.

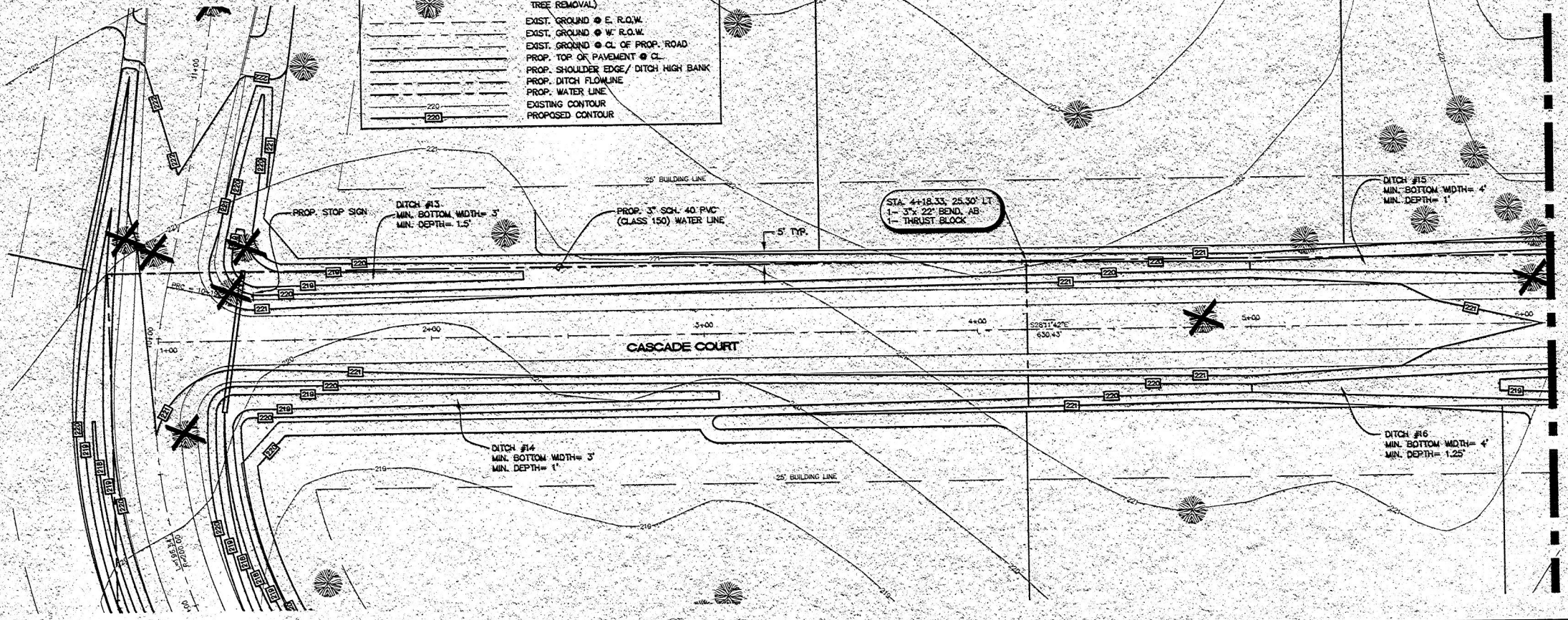
DRAWN: JBD	DESIGNED: JBD	CHECKED: JBP
PROJECT NO: 1300-001	DWG. NAME: PROP. ASS. DWG.	
DATE: 10/06/00	SCALE: HORIZ. 1" = 20'	
SURVEY: GEOMATICS	SCALE: VERT. 1" = 2'	

C:\PROJ\1300\1300-001\PROP. ASS. DWG. 10/06/00 10:36:56 2000 JD

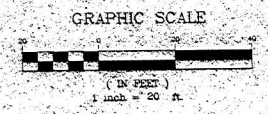
WEST SIDE OF STATE HIGHWAY NO. 149.
ELEVATION = 213.84

EXISTING TREE (X) DENOTES TREE REMOVAL

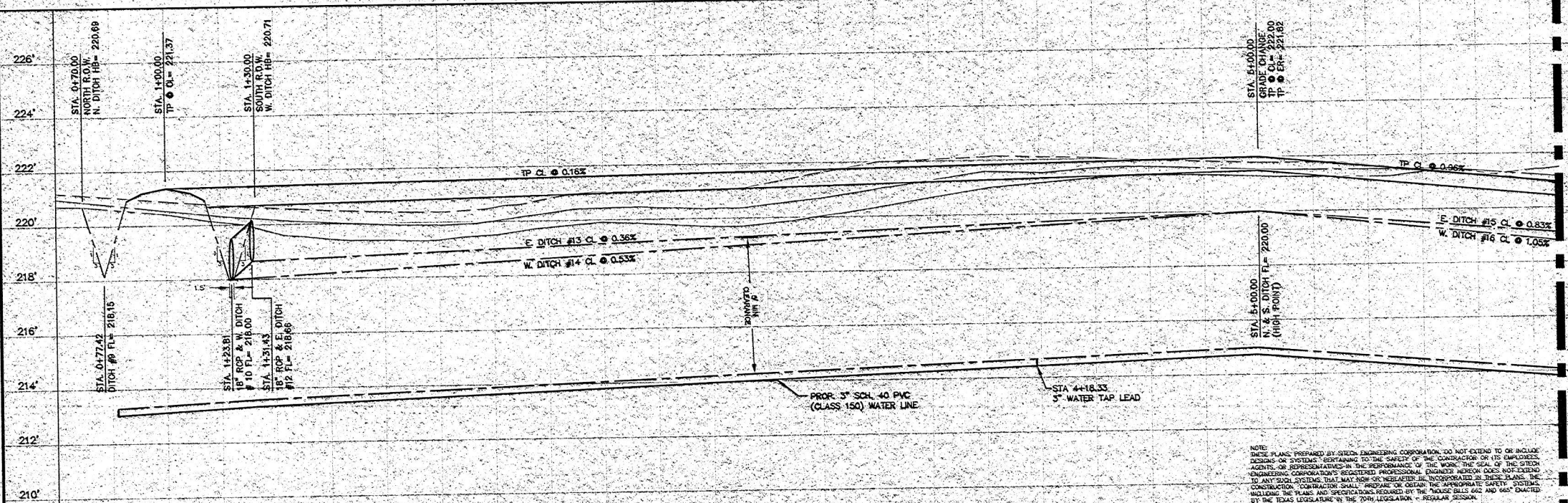
EXIST. GROUND ● E. R.O.W.
EXIST. GROUND ● W. R.O.W.
EXIST. GROUND ● CL OF PROP. ROAD
PROP. TOP OF PAVEMENT ● CL
PROP. SHOULDER EDGE/ DITCH HIGH BANK
PROP. DITCH FLOWLINE
PROP. WATER LINE
EXISTING CONTOUR
PROPOSED CONTOUR



MATCHLINE STATION 6+00.00
SEE SHEET C-7



APPROVED BY: MONTGOMERY COUNTY ENGINEER
MARK J. MOONEY



NO.	DATE	BY



COLIN JAMES CUSTOM HOMES
FALLS OF WILDWOOD
CASCADE COURT
STA 1+00.00 TO 6+10.00
MONTGOMERY COUNTY, TEXAS.

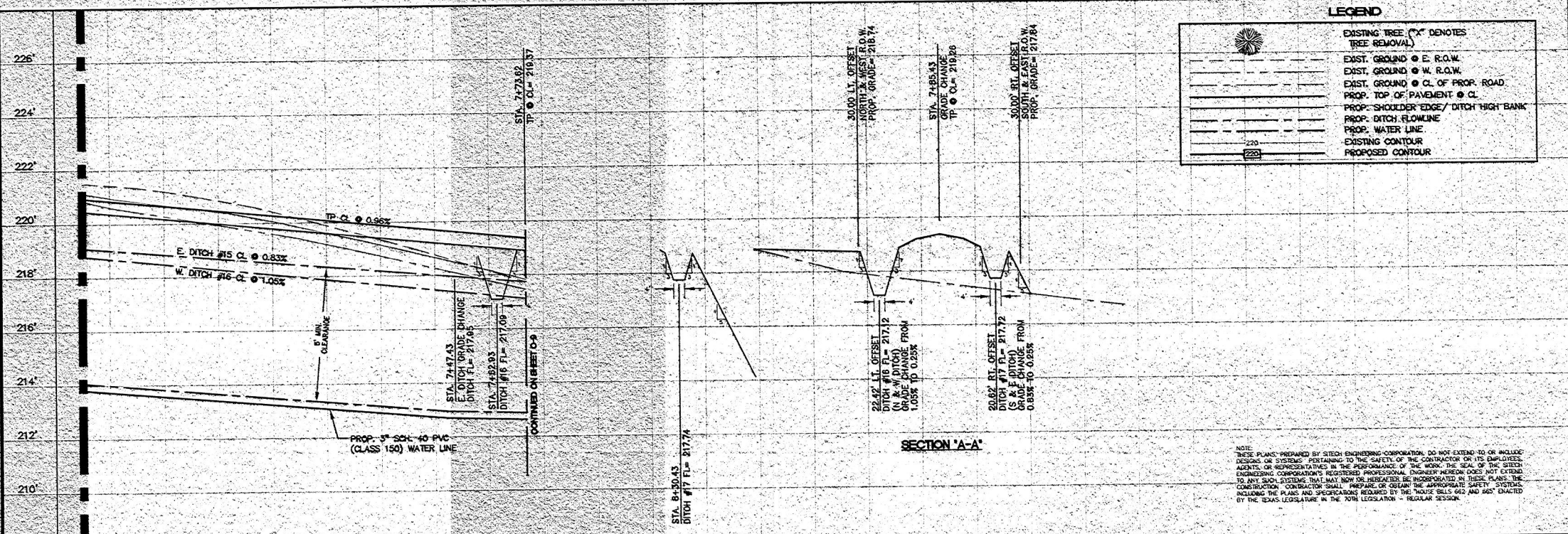
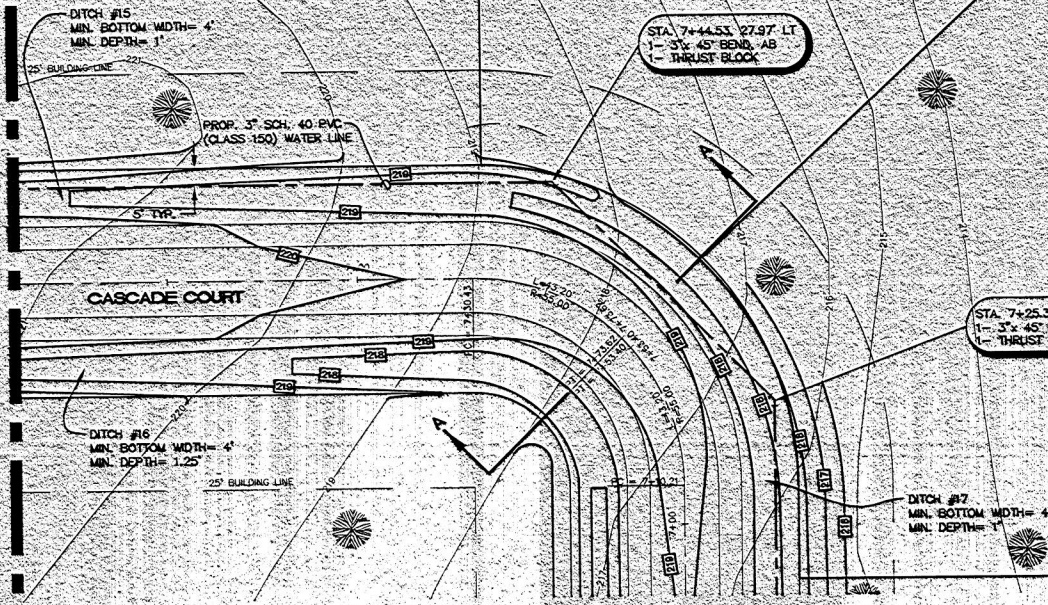
Sitech ENGINEERING CORP.
"The Site Technology Group"
1544 SANDUST ROAD, SUITE 100
THE WOODLANDS, TEXAS 77360
OFF. # (281) 363-4030 FAX # (281) 363-3450
e-mail: secc@sitheing.com
© COPYRIGHT 2000

DRAWN: JED CHECKED: JED
PROJECT NO: 1200-001 DWG. NAME: PPEASE.DWG
DATE: 05/00 HORIZ. 1" = 20'
SURVEY: GEOMATICS SCALES: VERT. 1" = 2'

NOTE:
THESE PLANS, PREPARED BY SITECH ENGINEERING CORPORATION, DO NOT EXTEND TO OR INCLUDE DESIGN OR SYSTEMS PERTAINING TO THE SAFETY OF THE CONTRACTOR OR ITS EMPLOYEES, AGENTS OR REPRESENTATIVES IN THE PERFORMANCE OF THE WORK. THE SEAL OF THE SITECH ENGINEERING CORPORATION'S REGISTERED PROFESSIONAL ENGINEER HEREON DOES NOT EXTEND TO ANY SUCH SYSTEMS THAT MAY NOW OR HEREAFTER BE INCORPORATED IN THESE PLANS. THE CONTRACTOR SHALL PREPARE OR OBTAIN THE APPROPRIATE SAFETY SYSTEMS INCLUDING THE PLANS AND SPECIFICATIONS REQUIRED BY THE HOUSE BILLS 662 AND 665 ENACTED BY THE TEXAS LEGISLATURE IN THE 70TH LEGISLATION - REGULAR SESSION.

C:\153011339-001\FRASE.DWG Mon Jul 31 10:56:16 2000 JD

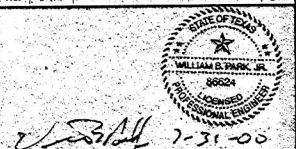
MAT-LINE STATION 6+10.00
SEE SHEET C-8



LEGEND

	EXISTING TREE ("X" DENOTES TREE REMOVAL)
	EXIST. GROUND @ E. R.O.W.
	EXIST. GROUND @ W. R.O.W.
	EXIST. GROUND @ CL. OF PROP. ROAD
	PROP. TOP OF PAVEMENT @ CL.
	PROP. SHOULDER EDGE/ DITCH HIGH BANK
	PROP. DITCH FLOWLINE
	PROP. WATER LINE
	EXISTING CONTOUR
	PROPOSED CONTOUR

APPROVED BY: MONTGOMERY COUNTY ENGINEER
MARK J. MOONEY

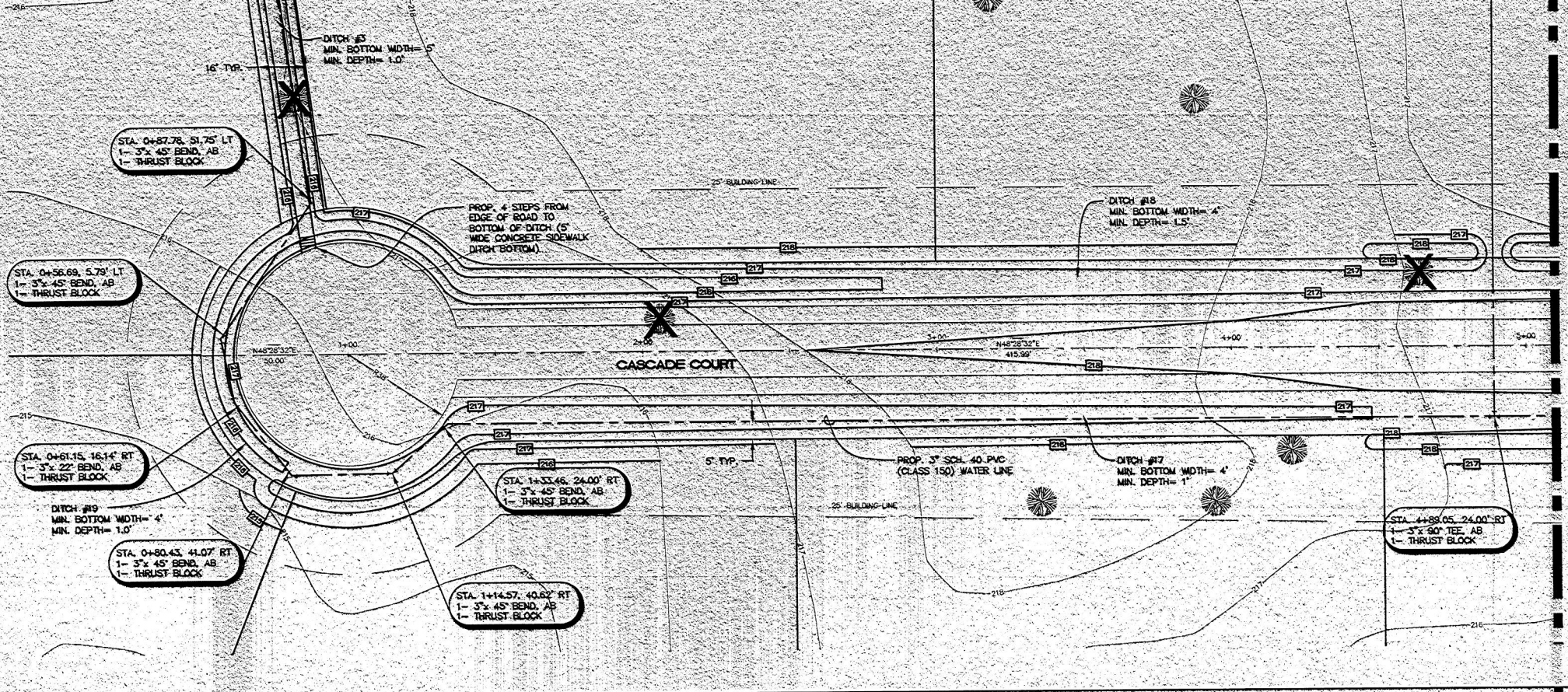


COLIN JAMES CUSTOM HOMES
FALLS OF WILDWOOD
CASCADE COURT
STA 6+10.00 TO 8+35.43
MONTGOMERY COUNTY, TEXAS

Stuech ENGINEERING CORP.
The Site Technology Group
1544 SANDHURST ROAD, SUITE 100
THE WOODLANDS, TEXAS 77380
OFF. # (281) 343-4038 FAX # (281) 343-3459
e-mail: sec@stuech.com
© COPYRIGHT 2000

NOTE: THESE PLANS, PREPARED BY STUECH ENGINEERING CORPORATION, DO NOT EXTEND TO OR INCLUDE DESIGN OR SYSTEMS PERTAINING TO THE SAFETY OF THE CONTRACTOR OR ITS EMPLOYEES, AGENTS, OR REPRESENTATIVES IN THE PERFORMANCE OF THE WORK. THE SEAL OF THE SITECH ENGINEERING CORPORATION'S REGISTERED PROFESSIONAL ENGINEER HEREON DOES NOT EXTEND TO ANY SUCH SYSTEMS THAT MAY NOW OR HEREAFTER BE INCORPORATED IN THESE PLANS. THE CONSTRUCTION CONTRACTOR SHALL PREPARE OR OBTAIN THE APPROPRIATE SAFETY SYSTEMS INCLUDING THE PLANS AND SPECIFICATIONS REQUIRED BY THE HOUSE BILLS 662 AND 885 ENACTED BY THE TEXAS LEGISLATURE IN THE 70TH LEGISLATION - REGULAR SESSION.

DRAWN: JED DESIGNED: JED CHECKED: JED
PROJECT: 1309-001 DWG. NAME: PE/BAE/DWG
DATE: 08/02 SCALE: HORIZ. 1" = 20'
SURVEY: GEOMATICS VERT. 1" = 2'



MATCHLINE STATION 5+00.00
SEE SHEET C-9

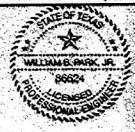


NOTE: THESE PLANS, PREPARED BY SITECH ENGINEERING CORPORATION, DO NOT EXTEND TO OR INCLUDE DESIGNS OR SYSTEMS PERTAINING TO THE SAFETY OF THE CONTRACTOR OR ITS EMPLOYEES, AGENTS OR REPRESENTATIVES IN THE PERFORMANCE OF THE WORK. THE GOAL OF THE SITECH ENGINEERING CORPORATION'S REGISTERED PROFESSIONAL ENGINEER HEREON DOES NOT EXTEND TO ANY SUCH SYSTEMS THAT MAY NOW OR HEREINAFTER BE INCORPORATED IN THESE PLANS. THE CONTRACTOR SHALL PREPARE OR OBTAIN THE APPROPRIATE SAFETY SYSTEMS INCLUDING THE PLANS AND SPECIFICATIONS REQUIRED BY THE THOSE REGULATIONS AND GOVT. STATUTES BY THE TEXAS LEGISLATURE IN THE 70TH LEGISLATURE - REGULAR SESSION.

LEGEND	
	EXISTING TREE (X) DENOTES TREE REMOVAL
	EXIST. GROUND @ N. R.O.W.
	EXIST. GROUND @ S. R.O.W.
	EXIST. GROUND @ CL. OF PROP. ROAD
	PROP. TOP OF PAVEMENT @ CL.
	PROP. SHOULDER EDGE/DITCH HIGH BANK
	PROP. DITCH FLOWLINE
	PROP. WATER LINE
	EXISTING CONTOUR
	PROPOSED CONTOUR

APPROVED BY: MONTGOMERY COUNTY ENGINEER
MARK J. MOONEY

NO.	DATE	BY



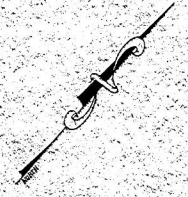
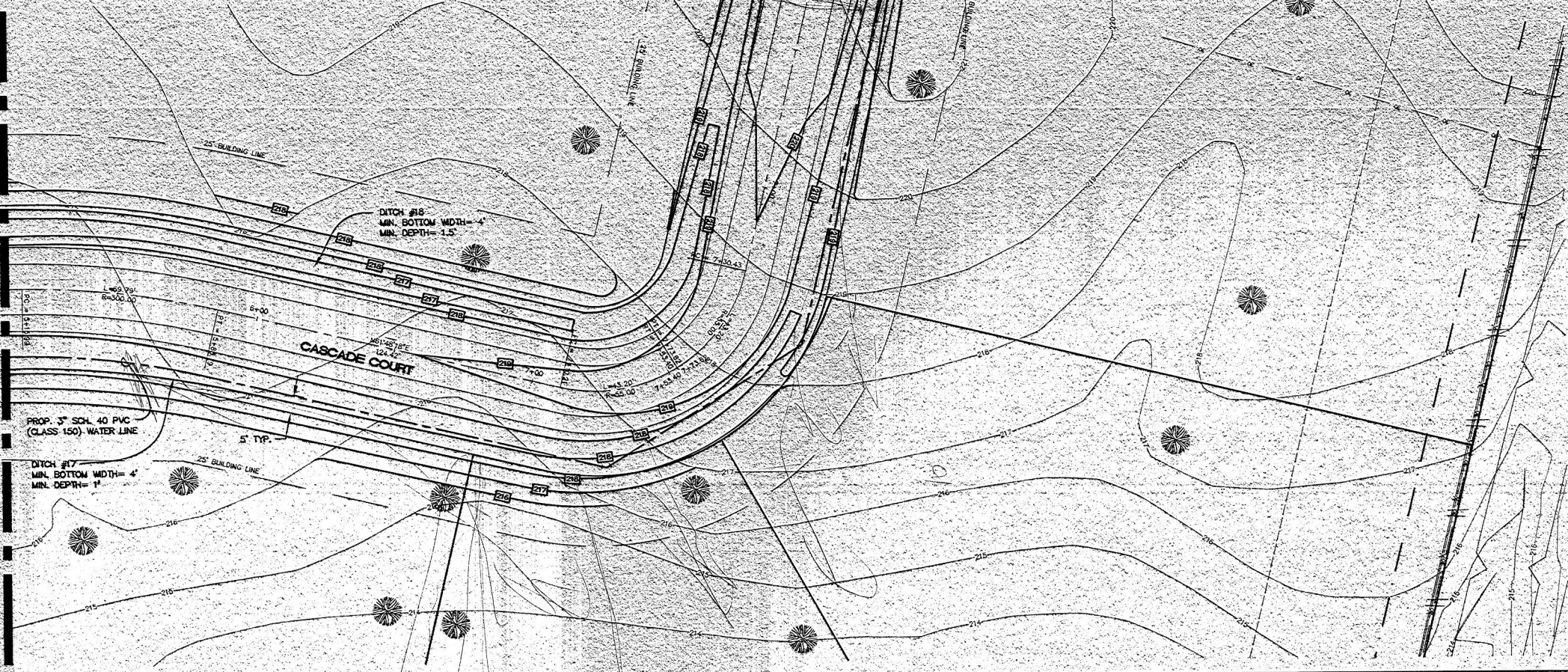
7-31-00
COLIN JAMES CUSTOM HOMES
FALLS OF WILDWOOD
CASCADE COURT
STA 0+00.00 TO 5+10.00
MONTGOMERY COUNTY, TEXAS

Sitech ENGINEERING CORP.
The Site Technology Group
1544 SANDAUST ROAD, SUITE 100
THE WOODLANDS, TEXAS 77380
OFF. # (281) 363-4039 FAX # (281) 363-3459
e-mail: esoc@sitecheng.com
© copyright 2000

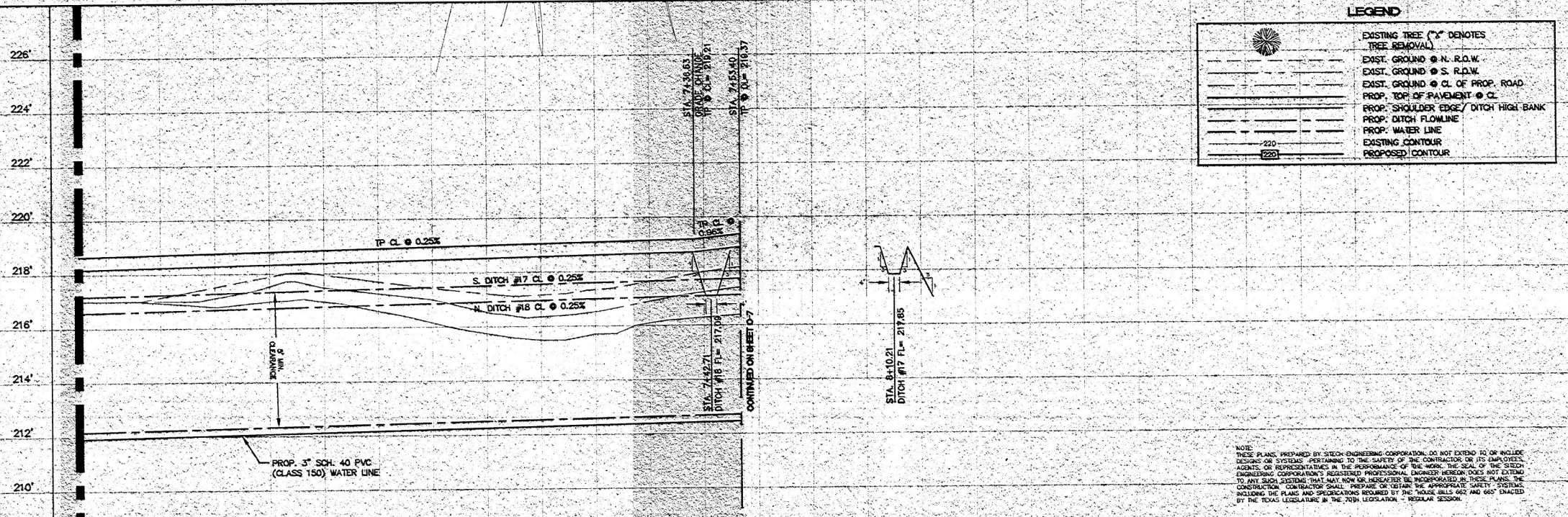
DATE	SCALE	HORIZ.	VERT.
06/00	1" = 20'	1" = 20'	1" = 2'

CONCRETE HEADWALL LOCATED ON THE WEST SIDE OF STATE HIGHWAY NO. 148. ELEVATION = 213.64

MATCHLINE STATION 5+10.00 SEE SHEET C-8



APPROVED BY: *Mark J. Mooney* dlm
 MONTGOMERY COUNTY ENGINEER
 MARK J. MOONEY



LEGEND

	EXISTING TREE (X DENOTES TREE REMOVAL)
	EXIST. GROUND @ N. R.O.W.
	EXIST. GROUND @ S. R.O.W.
	EXIST. GROUND @ CL OF PROP. ROAD
	PROP. TOP OF PAVEMENT @ CL
	PROP. SHOULDER EDGE/ DITCH HIGH BANK
	PROP. DITCH FLOWLINE
	PROP. WATER LINE
	EXISTING CONTOUR
	PROPOSED CONTOUR



Chris Ray 7-31-20
 COLIN JAMES CUSTOM HOMES
 FALLS OF WILDWOOD
 CASCADE COURT
 STA 5+10.00 TO 8+15.21
 MONTGOMERY COUNTY, TEXAS

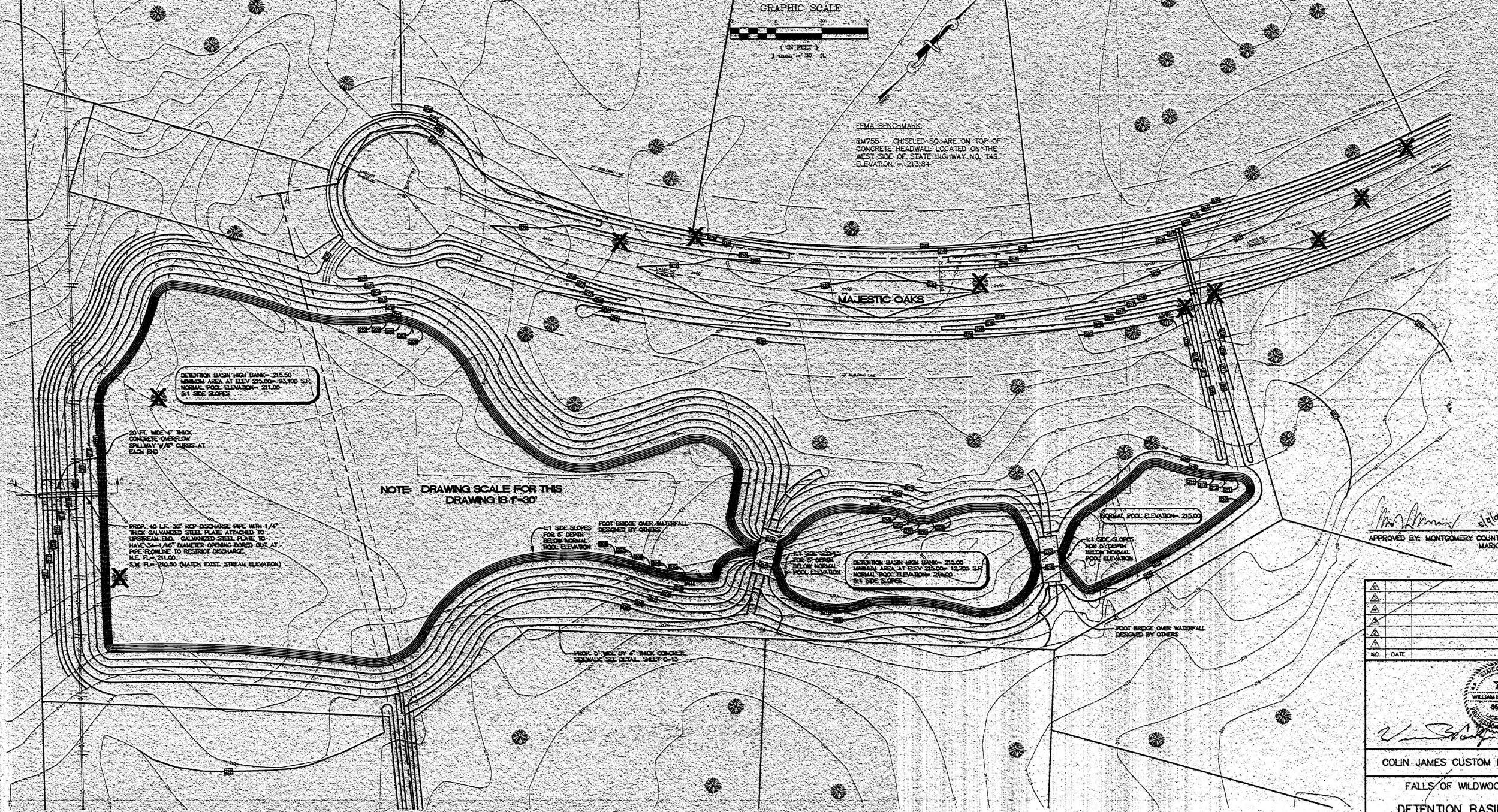
Sitech ENGINEERING CORP.
 "The Site Technology Group"
 1544 SANDHURST ROAD, SUITE 100
 THE WOODLANDS, TEXAS 77380
 OFF. # (281) 363-4036 FAX # (281) 363-3450
 e-mail: info@sitech-engineering.com
 © COPYRIGHT 2000

NOTE: THESE PLANS, PREPARED BY SITECH ENGINEERING CORPORATION, DO NOT EXTEND TO OR INCLUDE DESIGNS OR SYSTEMS PERTAINING TO THE SAFETY OF THE CONTRACTOR OR ITS EMPLOYEES, AGENTS, OR REPRESENTATIVES IN THE PERFORMANCE OF THE WORK. THE SEAL OF THE SITECH ENGINEERING CORPORATION'S REGISTERED PROFESSIONAL ENGINEER HEREON DOES NOT EXTEND TO ANY SUCH SYSTEMS THAT MAY NOW OR HEREAFTER BE INCORPORATED IN THESE PLANS. THE CONTRACTOR SHALL PREPARE OR OBTAIN THE APPROPRIATE SAFETY SYSTEMS INCLUDING THE PLANS AND SPECIFICATIONS REQUIRED BY THE HOUSE BILLS 662 AND 665 ENACTED BY THE TEXAS LEGISLATURE IN THE 76TH LEGISLATION - REGULAR SESSION.

PROJECT: 13001309-001/PRAISE.dwg Mod: 03/21/10 4:15:20 PM JD



FEMA BENCHMARK
 BM755 - CHISELED SQUARE ON TOP OF CONCRETE HEADWALL LOCATED ON THE WEST SIDE OF STATE HIGHWAY NO. 149. ELEVATION = 213.84



APPROVED BY: MONTGOMERY COUNTY ENGINEER
 MARK J. MOONEY

NO.	DATE	BY

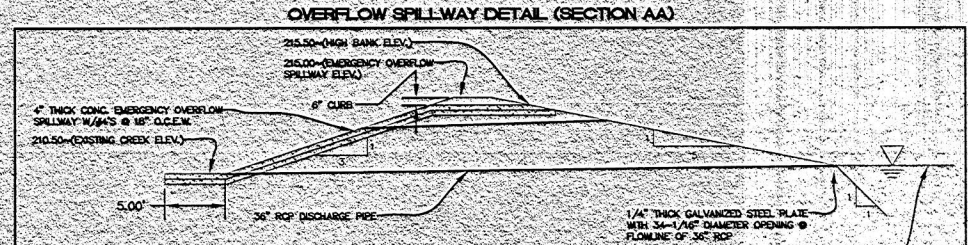


COLIN JAMES CUSTOM HOMES
 FALLS OF WILDWOOD
 DETENTION BASIN/
 PONDS & LAKES
 MONTGOMERY COUNTY, TEXAS

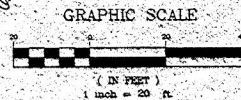
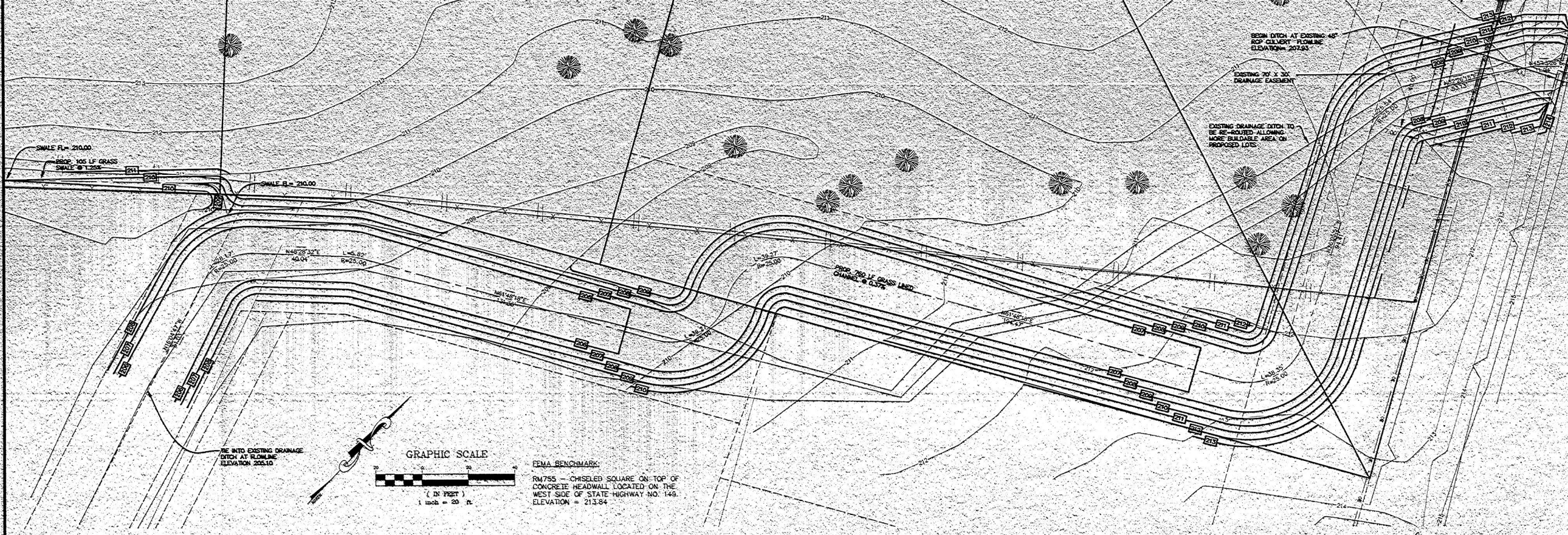
Sitech ENGINEERING CORP
 "The Site Technology Group"
 1544 SANDUST ROAD, SUITE 100
 THE WOODLANDS, TEXAS 77380
 OFF. # (281) 363-4039 FAX # (281) 363-3458
 e-mail: seo@sittech.com
 © COPYRIGHT 2000

LEGEND

	EXISTING TREE (X) DENOTES TREE REMOVAL
	EXIST. GROUND @ N. R.O.W.
	EXIST. GROUND @ S. R.O.W.
	EXIST. GROUND @ CL OF PROP. ROAD
	PROP. TOP OF PAVEMENT @ CL
	PROP. SHOULDER EDGE/ DITCH HIGH BANK
	PROP. DITCH FLOWLINE
	PROP. WATER LINE
	EXISTING CONTOUR
	PROPOSED CONTOUR



PROJECT 13001300-001/PB/BS: 0-5 Mon Jul 31 10:43 2000 40



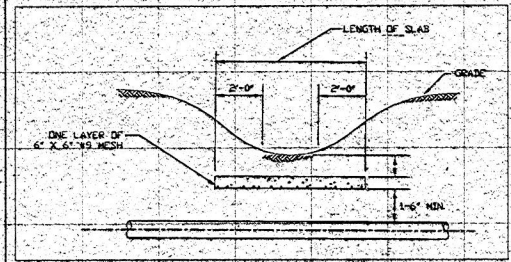
FEMA BENCHMARK
 RM755 - CHISELED SQUARE ON TOP OF CONCRETE HEADWALL LOCATED ON THE WEST SIDE OF STATE HIGHWAY NO. 145. ELEVATION = 213.84

RE INTO EXISTING DRAINAGE DITCH AT FLOWLINE ELEVATION 205.10

BEGIN DITCH AT EXISTING 48" RCP CULVERT FLOWLINE ELEVATION 207.85

EXISTING 70' X 30' DRAINAGE EASEMENT

EXISTING DRAINAGE DITCH TO BE RE-ROUTED ALLOWING MORE BUILDABLE AREA ON PROPOSED LOTS

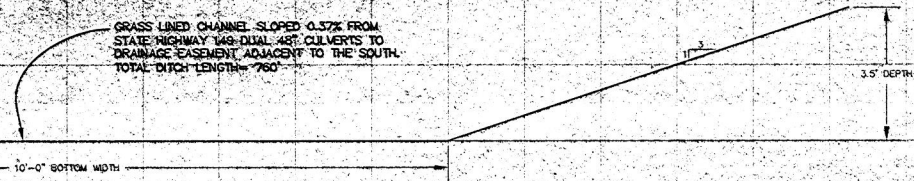


CORAL ENERGY CONCRETE CAP DETAIL PLAN VIEW

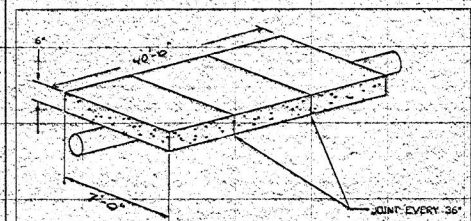
NOTES:

- IN ACCORDANCE WITH THE TEXAS UNDERGROUND FACILITY DAMAGE PREVENTION AND SAFETY ACT, ANY EXCAVATOR USING MECHANICAL TOOLS OR EQUIPMENT TO DIG 16" OR DEEPER NEAR CORAL ENERGY PIPELINES MUST CALL AND GIVE AT LEAST 48 HOURS NOTICE (EXCLUDING WEEKENDS AND LEGAL HOLIDAYS) BUT NOT MORE THAN 14 WORKING DAYS. THE EXCAVATOR SHALL CALL ONE OF THE THREE EXISTING NOTIFICATION CENTERS OR THE NEW STATEWIDE TOLL-FREE NUMBER OF THE ONE-CALL BOARD OF TEXAS. THE REQUIRED NOTICE SHALL INCLUDE:
- 1) THE NAME OF THE PERSON GIVING NOTICE.
 - 2) THE LOCATION OF THE PROPOSED EXCAVATION (STREET ADDRESS, IF APPLICABLE, OR ACCURATE DESCRIPTION USING AVAILABLE INFORMATION SUCH AS THE NEAREST ROADS, INTERSECTIONS, ETC.).
 - 3) THE NAME, ADDRESS, AND TELEPHONE NUMBER OF THE EXCAVATOR OR THE EXCAVATOR'S COMPANY.
 - 4) THE EXCAVATOR'S FIELD TELEPHONE NUMBER, IF ONE IS AVAILABLE.
 - 5) THE STARTING DATE AND TIME, AND THE ANTICIPATED COMPLETION DATE OF EXCAVATION.
 - 6) A STATEMENT AS TO WHETHER EXPLOSIVES WILL BE USED.
 - 7) THE FOUR STATEWIDE TOLL-FREE TELEPHONE NUMBERS THAT MAY BE CALLED ARE:
 ONE CALL BOARD OF TEXAS (800) 554-6005
 TEXAS EXCAVATION SAFETY SYSTEM, INC. (500) 344-8377
 TEXAS ONE-CALL SYSTEM (800) 245-4545
 LONE STAR NOTIFICATION SYSTEM (800) 569-5344

1. CORAL ENERGY SHALL BE NOTIFIED 48 HOURS PRIOR TO EXCAVATIONS NEAR OR AROUND ITS PIPELINE BY CALLING (713) 230-6213 MONDAY THROUGH FRIDAY. ASK FOR THE PERSON IN CHARGE OF ENCROACHMENTS.
2. CORAL ENERGY SHALL HAVE A REPRESENTATIVE PRESENT AT ALL TIMES DURING EXCAVATIONS NEAR, AROUND, OR ACROSS ITS PIPELINE.
3. NO CEMENT STABILIZED SOIL WILL BE PLACED NEXT TO THE PIPELINE. BACKFILL SHALL BE CLEAN SAND OR DEBRIS FREE SOIL FROM THE IMMEDIATE AREA.
4. AT LEAST 24 INCHES OF CLEARANCE WILL BE MAINTAINED BETWEEN THE PIPELINE AND ANY NEW UTILITY CROSSING THE PIPELINE.
5. NO COVER WILL BE REMOVED FROM THE PIPELINE WHICH WILL CAUSE LESS THAN 4 FEET OF COVER OVER THE PIPELINE.
6. NO MATERIAL SHALL BE STORED ON THE PIPELINE.
7. HEAVY EQUIPMENT SHALL NOT BE PERMITTED TO CROSS THE PIPELINE WITHOUT WOODEN EQUIPMENT MATS.



SOUTH DRAINAGE DITCH
 SCALE: 1" = 2'



CORAL ENERGY CONCRETE CAP DETAIL

NOTE: THESE PLANS, PREPARED BY SITECH ENGINEERING CORPORATION, DO NOT EXTEND TO OR INCLUDE DESIGNS OR SYSTEMS PERTAINING TO THE SAFETY OF THE CONTRACTOR OR ITS EMPLOYEES, AGENTS OR REPRESENTATIVES IN THE PERFORMANCE OF THE WORK. THE SEAL OF THE SITECH ENGINEERING CORPORATION'S REGISTERED PROFESSIONAL ENGINEER HEREON DOES NOT EXTEND TO ANY SUCH SYSTEMS THAT MAY NOW OR HEREAFTER BE INCORPORATED IN THESE PLANS. THE CONTRACTOR SHALL PREPARE OR OBTAIN THE APPROPRIATE SAFETY SYSTEMS.

LEGEND

	EXISTING TREE ("X" DENOTES TREE REMOVAL)
	EXIST. GROUND @ N. R.O.W.
	EXIST. GROUND @ S. R.O.W.
	EXIST. GROUND @ CL OF PROP. ROAD
	PROP. TOP OF PAVEMENT @ CL
	PROP. SHOULDER EDGE / DITCH HIGH BANK
	PROP. DITCH FLOWLINE
	PROP. WATER LINE
	EXISTING CONTOUR
	PROPOSED CONTOUR

APPROVED BY: MONTGOMERY COUNTY ENGINEER
 MARK J. MOONEY

NO.	DATE	BY

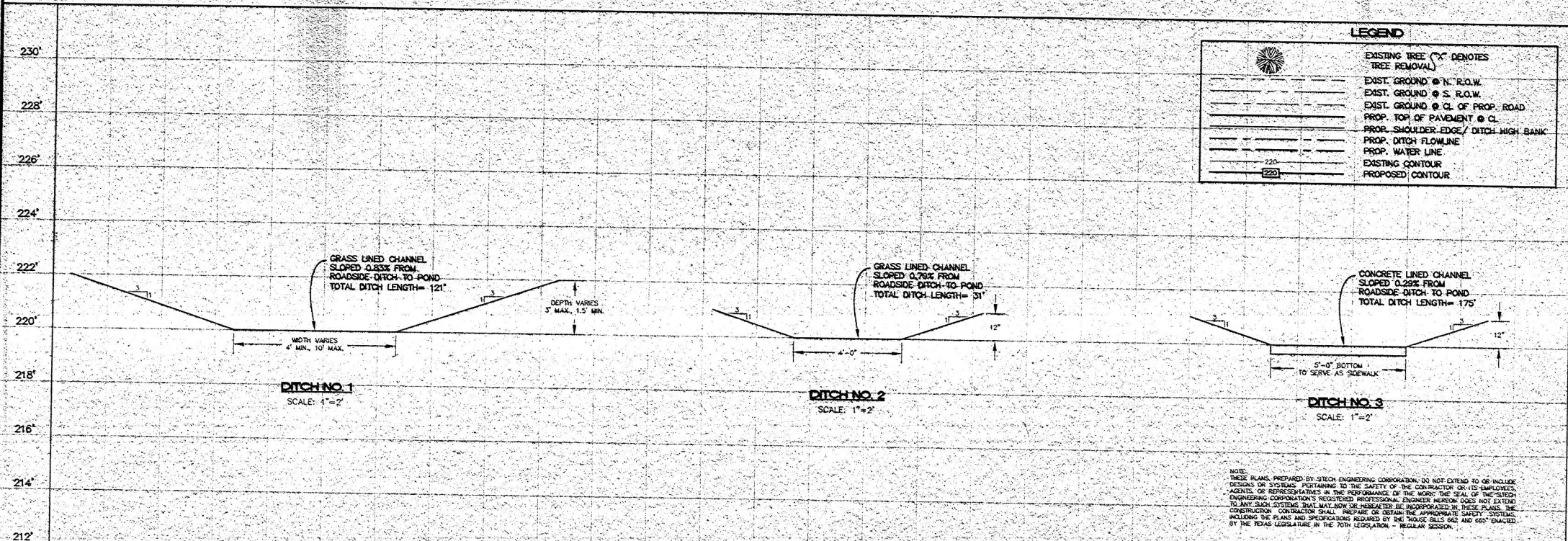
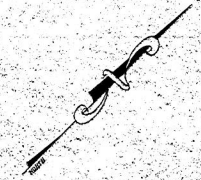
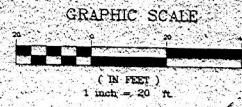
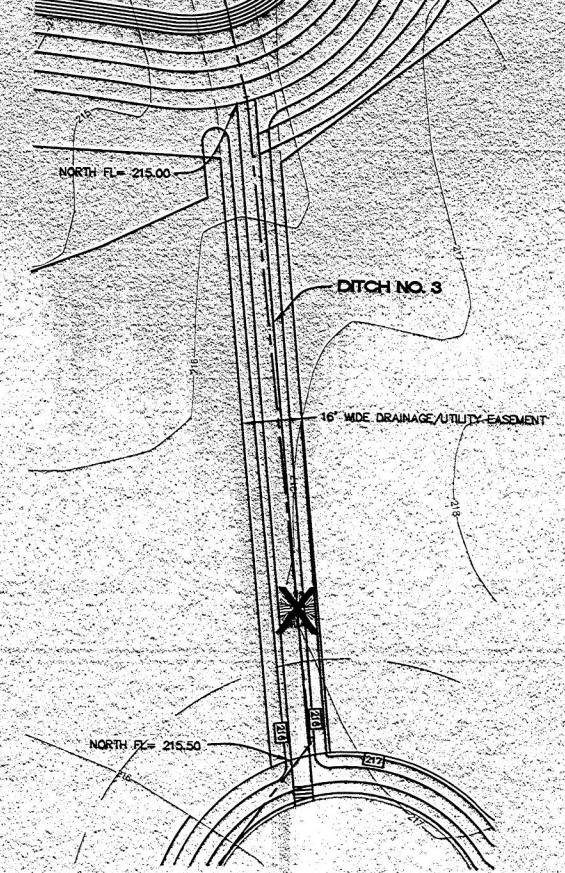
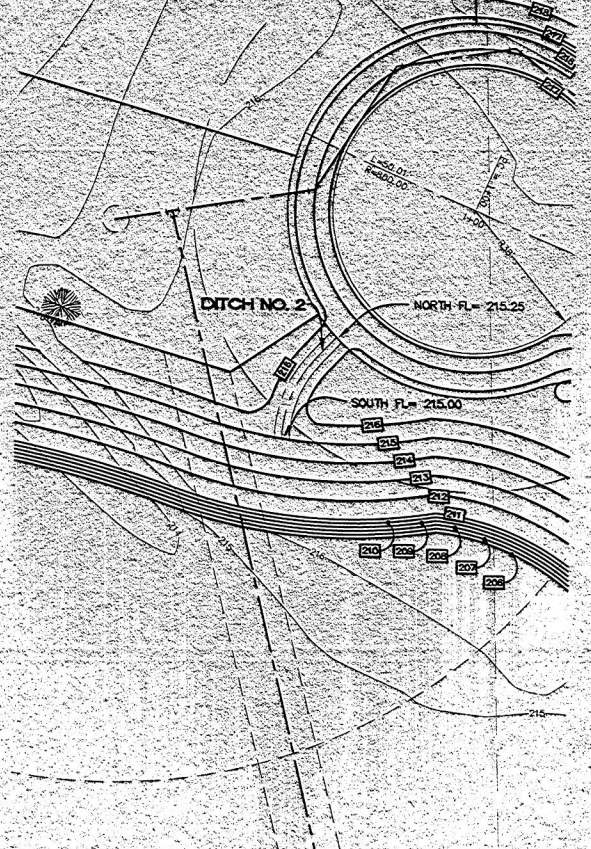
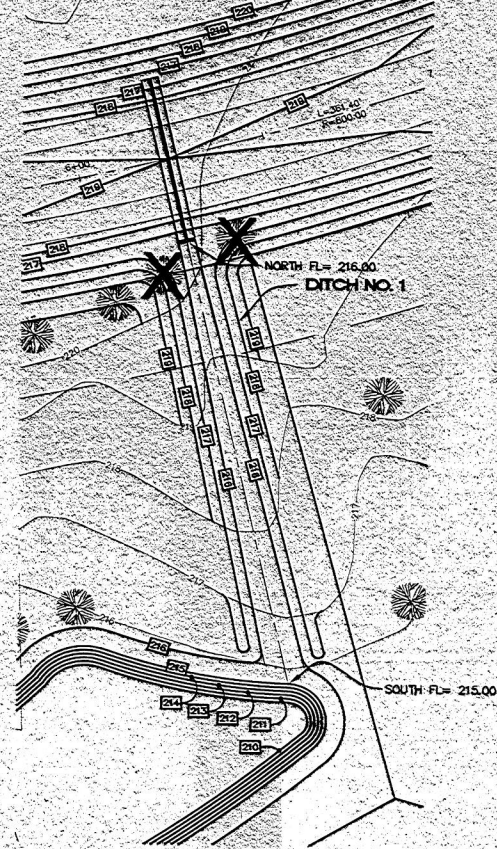
STATE OF TEXAS
 WILLIAM PARRIS, JR.
 REGISTERED PROFESSIONAL ENGINEER
 7-31-00

COLIN JAMES CUSTOM HOMES
 FALLS OF WILDWOOD
 SOUTH DRAINAGE DITCH
 PLAN & PROFILE
 MONTGOMERY COUNTY, TEXAS

Sitech ENGINEERING CORP.
 "The Site Technology Group"
 1544 SANDHURST ROAD, SUITE 100
 THE WOODLANDS, TEXAS 77380
 OFF. # (281) 363-4039 FAX # (281) 363-3458
 e-mail: sec@sitech.com
 © COPYRIGHT 2000

DESIGNED BY: JDM
 CHECKED BY: JDM
 PROJECT NO: 1309-001 DATE: 08/01/00
 DATE: 8/00 SCALE: 1" = 20'
 SURVEY: GEOMATICS VERT: 10

RM755 - CHISELED SQUARE ON TOP OF CONCRETE HEADWALL LOCATED ON THE WEST SIDE OF STATE HIGHWAY NO. 149. ELEVATION = 213.84



LEGEND

	EXISTING TREE ("X" DENOTES TREE REMOVAL)
	EXIST. GROUND @ N. R.O.W.
	EXIST. GROUND @ S. R.O.W.
	EXIST. GROUND @ CL. OF PROP. ROAD
	PROP. TOP OF PAVEMENT @ CL.
	PROP. SHOULDER EDGE / DITCH HIGH BANK
	PROP. DITCH FLOWLINE
	PROP. WATER LINE
	EXISTING CONTOUR
	PROPOSED CONTOUR

APPROVED BY: MONTGOMERY COUNTY ENGINEER
MARK J. MOONEY

NO.	DATE	BY



COLIN JAMES CUSTOM HOMES
FALLS OF WILDWOOD
PROPOSED DITCHES
PLAN & PROFILE
MONTGOMERY COUNTY, TEXAS

Sited ENGINEERING CORP.
The Site Technology Group
1544 SANDUST ROAD, SUITE 100
THE WOODLANDS, TEXAS 77380
OFF. # (281) 363-4039 FAX # (281) 363-3459
www.sited.com
© COPYRIGHT 2001

NOTE: THESE PLANS, PREPARED BY SITECH ENGINEERING CORPORATION, DO NOT EXTEND TO OR INCLUDE DESIGN OR REPRESENTATION IN THE PERFORMANCE OF THE WORK. THE SEAL OF THE SITECH ENGINEERING CORPORATION'S REGISTERED PROFESSIONAL ENGINEER HEREON DOES NOT EXTEND TO ANY SUCH SYSTEMS THAT MAY NOW OR HEREAFTER BE INCORPORATED IN THESE PLANS. THE CONTRACTOR SHALL BE RESPONSIBLE FOR OBTAINING THE APPROPRIATE SAFETY SYSTEMS INCLUDING THE PLANS AND SPECIFICATIONS REQUIRED BY THE HOUSE BILLS 662 AND 665 ENACTED BY THE TEXAS LEGISLATURE IN THE 70TH LEGISLATION - REGULAR SESSION.

DATE	06/09	SCALE	1" = 20'
SURVEY	GEOMATICS	HORIZ.	N.A.
VERT.	N.A.		

E:\01-001\01\1300\1300.dwg (P) 06/09/09 10:41:37 AM 2009

GENERAL CONSTRUCTION NOTES

- 1. THE CONTRACTOR SHALL BE RESPONSIBLE FOR CONTROLLING TRAFFIC IN THE IMMEDIATE VICINITY OF CONSTRUCTION. ALL WORK SHALL BE PERFORMED IN SUCH A MANNER AND SEQUENCE AS TO PROVIDE MAXIMUM PROTECTION TO TRAFFIC AND PEDESTRIANS. CONTROLS SHALL BE CONSISTENT WITH THE TYPE OF WORK BEING PERFORMED.
2. THE CONTRACTOR SHALL BE RESPONSIBLE FOR THE REMOVAL AND DISPOSAL OF ALL WASTE MATERIAL GENERATED DURING CONSTRUCTION. WASTE MATERIAL MUST BE REMOVED FROM THE WORK SITE AND DISPOSED OF IN SUCH A MANNER AS TO NOT DAMAGE THE OWNER OR OTHER PERSONS. (NO SEPARATE FEE FOR THIS ITEM)
3. THE CONTRACTOR SHALL COORDINATE HIS CONSTRUCTION SCHEDULE WITH THE ENGINEER PRIOR TO COMMENCING WORK.
4. THE CONTRACTOR SHALL MAINTAIN ADEQUATE DRAINAGE AT ALL TIMES DURING CONSTRUCTION.
5. CONTRACTOR IS RESPONSIBLE FOR ESTABLISHING FINAL GRADES TO ASSURE POSITIVE DRAINAGE.
6. THE CONTRACTOR MUST CLEAN MUD, DIRT OR DEBRIS TRACKED ONTO EXISTING STREETS BY ANY VEHICLES THAT EXIT FROM THE SITE.
7. THE CONTRACTOR SHALL NOTIFY ALL UTILITY COMPANIES IN THE AREA A MINIMUM OF 48 HOURS PRIOR TO COMMENCING WORK. IN THE EVENT OF ANY EXISTING FACILITIES, THE CONTRACTOR SHALL CONTACT THE UTILITY COORDINATING COMMITTEE AT 713-233-4567, OR 1-800-242-4545, 48 HOURS PRIOR TO COMMENCING CONSTRUCTION.
8. CONTRACTOR SHALL BE RESPONSIBLE FOR PROVIDING REQUIRED SECURITY TO PROTECT HIS OWN PROPERTY, EQUIPMENT, AND WORK IN PROGRESS.
9. VERIFY ALL DIMENSIONS AND CONDITIONS IN THE FIELD BEFORE COMMENCING ANY WORK. IT SHALL BE CONTRACTOR'S RESPONSIBILITY TO REPORT ANY DISCREPANCIES TO THE OWNER IN A TIMELY MANNER.
10. OVERHEAD POWER LINES EXIST IN THE AREA OF THE PROJECT. TEXAS LAW ARTICLE 1425C, PROHIBITS ALL ACTIVITIES IN WHICH PERSONS OR EQUIPMENT MAY COME WITHIN SIX (6) FEET OF ENERGIZED OVERHEAD POWER LINES. AND FEDERAL REGULATIONS, TITLE 29 PART 1926.1001(H) AND PART 1926.440(A)(1)(9) REQUIRE A MINIMUM OF TEN (10) FEET FROM THESE FACILITIES. WHEN CONSTRUCTION MUST WORK NEAR OVERHEAD POWER LINES, ALL (800) 332-7143 FOR THE LINES TO BE DE-ENERGIZED AND/OR MOVED AT CONTRACTOR'S EXPENSE.
11. THE CONTRACTOR SHALL COMPLY WITH OSHA REGULATIONS AND STATE OF TEXAS AND CITY LAW CONCERNING EXCAVATION, TRENCHING AND SHORING.
12. THE DRAWINGS SHOW AS MUCH INFORMATION AS CAN BE REASONABLY OBTAINED FROM AN ON THE GROUND OBSERVATION, SURVEY AND EXISTING CONSTRUCTION DRAWINGS REGARDING THE TOPOGRAPHIC FEATURES, ELEVATIONS, AS WELL AS THE LOCATION AND NATURE OF PIPELINES, NATURAL GAS LINES, UNDERGROUND CABLES, UTILITIES, ETC. HOWEVER, THE ACCURACY OR COMPLETENESS OF SUCH INFORMATION IS NOT GUARANTEED.
13. IN THE EVENT OF DAMAGE TO UNDERGROUND UTILITIES OR FACILITIES, WHETHER SHOWN OR NOT ON THE DRAWINGS, THE CONTRACTOR SHALL MAKE THE NECESSARY REPAIRS TO REPLACE THE UTILITY OR FACILITY BACK IN SERVICE AT NO INCREASE IN THE CONTRACT PRICE AND ALL SUCH REPAIRS SHALL CONFORM TO THE REQUIREMENTS OF THE COMPANY OR AGENCY SERVICING THE FACILITY.
14. THE CONTRACTOR SHALL UNCOVER ALL EXISTING UTILITIES AND VERIFY EXISTING ELEVATIONS OF SAME. ALL UTILITY CROSSINGS AND CONNECTIONS SHALL BE CHECKED FOR CONFLICT BEFORE COMMENCING ANY OTHER WORK. CONFLICTS SHALL BE REPORTED TO THE ENGINEER IMMEDIATELY.
15. CONTRACTOR SHALL BE FULLY RESPONSIBLE FOR MAINTAINING A SAFE PROJECT SITE 24 HOURS A DAY. AS A MINIMUM, THE GUIDELINES SET FORTH IN THE MANUAL ON UNIFORM TRAFFIC CONTROL DEVICES SHALL BE OBSERVED.
16. ADEQUATE DRAINAGE SHALL BE MAINTAINED AT ALL TIMES DURING CONSTRUCTION AND ANY DRAINAGE STRUCTURE DISTURBED DURING CONSTRUCTION SHALL BE RESTORED TO THE SATISFACTION OF THE OWNING AUTHORITY.
17. CONTRACTOR SHALL BE RESPONSIBLE FOR OBTAINING ALL APPLICABLE CITY, COUNTY, STATE, AND FEDERAL PERMITS.
18. NO CONSTRUCTION WHICH BLOCKS TRAFFIC OF ANY STREET, ALLEY, OR DRIVEWAY WILL BE ALLOWED DURING THE HOURS OF 8:30 - 8:30 A.M. AND 4:30 - 8:00 P.M.
19. INGRESS AND EGRESS SHALL BE PROVIDED AT ALL TIMES FOR THE PROPERTY OWNERS AND BUSINESSES OF THE ADJUTING PROPERTY AND THE CROSS STREETS WHICH ARE AFFECTED BY THE CONSTRUCTION THIS PROJECT.
20. DURING THE ENTIRE CONSTRUCTION PERIOD, THE CONTRACTOR SHALL MAINTAIN CONSTRUCTION WARNING SIGNS AT EACH END OF THE PROJECT TO MAINTAIN MOTORIST AND PEDESTRIAN TRAFFIC. CONSTRUCTION IS IN PROGRESS AND OF POSSIBLE HAZARDOUS CONDITIONS GENERATED BY THE CONSTRUCTION.
21. ALL DIMENSIONS SHOWN ARE APPROXIMATE AND ARE TO BE VERIFIED BY THE CONTRACTOR. CHANGES IN HORIZONTAL OR VERTICAL ALIGNMENT ARE TO BE APPROVED BY THE ENGINEER.
22. CONDITION OF THE ROAD AND/OR RIGHT-OF-WAY UPON COMPLETION OF JOB SHALL BE AS GOOD OR BETTER THAN PRIOR TO STARTING WORK.
23. ANY WORK IN PUBLIC RIGHT-OF-WAY SHALL BE PERFORMED TO THE STANDARDS OF THE GOVERNING AUTHORITY.
24. ALL AREAS DISTURBED BY CONSTRUCTION WHICH ARE NOT TO BE REPAIRED OR OTHERWISE COVERED, SHALL BE HYDRO-MULCH SEEDING.

- 25. CONTRACTOR SHALL VERIFY LOCATION AND ELEVATION OF ALL PROPOSED UTILITIES EXISTING BEFORE PRIOR TO COMMENCING WORK ON SITE UTILITIES. UPON ANY DISCREPANCIES, ENGINEER IS TO BE NOTIFIED.
26. CONTRACTOR SHALL REFER TO ARCHITECTURAL PLANS FOR EXACT LOCATION AND DIMENSIONS OF PARKING, RAMP, PREISE BUILDING, DIMENSION AND BUILDING UTILITY ENTRANCE LOCATION.
27. CONTRACTOR IS TO BUILD ALL PROPOSED UTILITIES PRIOR TO SUBGRADE PREPARATION.
28. CONTRACTOR IS TO SAVE AND PROTECT TREES NOT BEING CLEARED DURING CONSTRUCTION. PROTECTIVE DEVICES SUCH AS FENCING AROUND TREES SHALL BE INSTALLED TO KEEP VEHICLES AND CONSTRUCTION ACTIVITIES AWAY FROM DRIFLINE TO BE SAVED.
29. PRIOR TO BEGINNING CONSTRUCTION THE CONTRACTOR SHALL LOCATE AND PROTECT ALL UNDERGROUND AND ABOVE GROUND UTILITIES.
30. AREAS TO BE PAVED SHALL BE CLEARED AND GRUBBED, STRIPPED AND COMPACTED. SUBGRADE SHALL BE COMPACTED TO A MINIMUM THICKNESS OF 6" AT A MINIMUM OF 95% OF OPTIMUM DENSITY AS DETERMINED BY ASTM D 698 (STD. PROCTOR).
31. ALL EARTHWORK SHALL BE DONE IN COMPLIANCE WITH RECOMMENDATIONS OF SOILS REPORT PREPARED BY GEOTECHNICAL ENGINEER.

UTILITY NOTES

- 1. ALL SEWER PIPE UNDER PROPOSED FUTURE PAVEMENT TO HAVE CLASS "AA" BEDDING AND BACKFILLED WITH CEMENT STABILIZED SAND AS PER SPECIFICATIONS.
2. PLACE BACKFILL AS PROMPTLY AND AS PRACTICABLE AFTER COMPLETION OF EACH STRUCTURE OR PORTION OF A STRUCTURE. DO NOT PLACE BACKFILL AGAINST CONCRETE WALLS OR SIMILAR STRUCTURES UNTIL CONCRETE HAS CURED AT LEAST SEVEN (7) DAYS.
3. CEMENT SAND BACKFILL SHALL CONSIST OF NOT LESS THAN 1 1/2 SACKS OF CEMENT PER CUBIC YARD OF SAND WITH SUFFICIENT WATER TO HYDRATE THE CEMENT. IT SHALL BE PLACED IN LAYERS EIGHT (8) INCHES THICK MAXIMUM AND COMPACTED TO 95% MAXIMUM DENSITY AT OPTIMUM MOISTURE.
4. CONTRACTOR TO INSTALL GROUND WATER CONTROL FACILITIES IF NEEDED TO CONTROL WATER IN UTILITY TRENCH EXCAVATION AT NO ADDITIONAL COST TO OWNER.
5. TIE-INS TO EXISTING MANHOLES SHALL BE MADE SUCH THAT THE FINAL CONDITION UPON COMPLETION OF THE JOB SHALL BE AS GOOD OR BETTER THAN PRIOR TO STARTING THE WORK.
6. MISCELLANEOUS PVC FITTINGS REQUIRED TO ROUTE SANITARY SEWER OUTSIDE OF BUILDING ARE NOT CALLED FOR ON PLANS BUT SHALL BE FURNISHED BY CONTRACTOR AT NO ADDITIONAL COST TO OWNER.
7. WATER SERVICE LINE SHALL BE SCHEDULE 40 PVC.
8. ELECTRIC METER AND SERVICE LINE INSTALLATION TO BE COORDINATED WITH H&P BY CONTRACTOR.
9. MINIMUM COVER ON WATER LINES IS TO BE FOUR FOOT BELOW FINISHED GRADE ELEVATION.
10. BACKFILL ALL SEWERS UNDER AND ONE FOOT BEYOND PAVEMENT WITH CEMENT STABILIZED SAND UP TO BOTTOM OF PAVEMENT SUBGRADE.
11. SANITARY SEWER TO BE PRIVATELY OWNED, OPERATED AND MAINTAINED. NO PUBLIC BOND MONEY MAY BE SPENT ON PRIVATE SANITARY LINES.
12. ALL WATER TAPS TO BE DONE BY THE LOCAL UTILITY DISTRICT AND PAID FOR BY THE CONTRACTOR.
13. CONTRACTOR SHALL MEET THE REQUIREMENTS OF THE CITY OF MAGNOLIA AND THE LOCAL UTILITY DISTRICT FOR CONSTRUCTION OF WATER LINES, WASTEWATER LINES AND STORM SEWER FACILITIES.
14. SEE M.E.P. CONSTRUCTION PLANS FOR THE CONTINUATION OF WATER AND WASTEWATER LINES INTO THE BUILDING.
15. ALL PROPOSED SANITARY SEWER TO BE SDR 26 PVC WITH CLASS "AA" BEDDING.
16. ALL WATER LINES 4" AND LARGER TO MEET AWWA C-900 DR18. ALL WATER LINES SHALL BE SDR 26 PVC. WATER LINES SHALL BE FLUSHED, DISINFECTED AND PRESSURE TESTED PER CODE OF MAGNOLIA AND TEXAS NATURAL RESOURCE CONSERVATION COMMISSION.
17. BUILDING CONTRACTOR SHALL NOT MAKE ANY WATER OR SANITARY SEWER CONNECTIONS UNTIL THE PROPOSED PUBLIC WATER OR SANITARY SEWER HAS BEEN APPROVED BY THE TEXAS NATURAL RESOURCE CONSERVATION COMMISSION.
18. CONTRACTOR SHALL CONFORM TO THE REQUIREMENTS OF THE TxDOT PERMIT FOR ALL WORK IN THE VICINITY OF FM 11488.

FEDERAL LAW
49 UNITED STATES CODE, SECTION 60123 PARAGRAPH (d) (1) (B)
CRIMINAL PENALTIES: PENALTIES FOR NOT USING ONE-CALL NOTIFICATION SYSTEM OR NOT HEEDING LOCATION INFORMATION OR MARKINGS
A PERSON SHALL BE FINED UNDER TITLE 18, IMPRISONED FOR NOT MORE THAN 5 YEARS, OR BOTH, IF THE PERSON KNOWINGLY AND WILLFULLY ENGAGES IN AN EXCAVATION ACTIVITY WITHOUT PAYING ATTENTION TO APPROPRIATE LOCATION INFORMATION OR MARKINGS OF THE PIPELINE FACILITY ESTABLISHES.
29 CFR PART 1926 PARAGRAPH 1926.651 SUBPARAGRAPH (b) (3)
OSHA REGULATION: WHEN EXCAVATION OPERATIONS APPROACH THE ESTIMATED LOCATION OF UNDERGROUND INSTALLATIONS, THE EXACT LOCATION OF THE INSTALLATIONS SHALL BE DETERMINED BY SAFE AND ACCEPTABLE MEANS.

TEXAS LAW
TEXAS UNDERGROUND FACILITY DAMAGE PREVENTION AND SAFETY ACT (H.B. 2295)
ON OCT. 1, 1998:
1. ALL EXCAVATORS MUST BEGIN CALLING NOTIFICATION CENTERS 48 HOURS PRIOR TO DIGGING.
2. ALL EXCAVATORS MUST BEGIN IMMEDIATELY NOTIFYING UNDERGROUND FACILITY

PORTLAND CEMENT CONCRETE NOTES

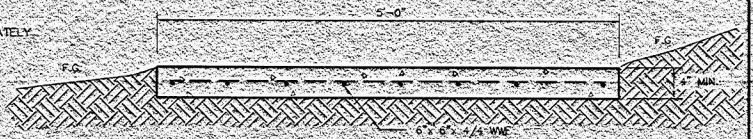
- THE FOLLOWING NOTES DEAL WITH REINFORCED PORTLAND CEMENT CONCRETE CURBS & SIDEWALKS:
1. EXPANSION JOINTS SHALL BE PLACED IN CONCRETE CURBS & SIDEWALKS AT APPROXIMATELY 70' SPACING. CONTROL OR CONSTRUCTION JOINTS SHALL BE PLACED BETWEEN THE EXPANSION JOINTS SPACED AT APPROXIMATELY 15 FEET.
2. A REDWOOD EXPANSION JOINT SHALL BE PLACED BETWEEN THE BUILDING FOUNDATION AND THE CONCRETE SIDEWALK.
3. CONCRETE CURB SHALL BE A MINIMUM OF 5 SACKS OF CEMENT PER CUBIC YARD AND SHALL HAVE A MINIMUM COMPRESSIVE STRENGTH OF 3,000 PSI AT 28 DAYS.
4. ALL STEEL REINFORCEMENT SHALL CONFORM TO ASTM A615 GRADE 60.
5. FOR TRAFFIC CONTROL AND SHORT TERM RIGHT LANE CLOSURE DURING THE CONSTRUCTION OF THE PROPOSED DRIVEWAYS, TYPE II BARRICADES SHALL BE PLACED ON THE DRIVEWAY TO FURTHEST ENTRANCE INTO THE NEWLY CONSTRUCTED DRIVEWAY DURING THE CONCRETE CURING PROCESS.
6. DETAILING AND FABRICATION OF CONCRETE REINFORCEMENT AND ACCESSORIES SHALL BE IN ACCORDANCE WITH ACI-318 LATEST EDITION.
7. LAP ALL CONTINUOUS REINFORCING STEEL 36 DIAMETERS AT SPLICES, TEES, AND CORNERS UNLESS NOTED OTHERWISE ON PLANS.
8. DELINEATORS SHALL BE INSTALLED ALONG THE PAVEMENT EDGE TO WARN TRAFFIC OF ANY ROADSIDE OBJECTS OR HAZARDS AND TO DELINEATE THE ROADWAY EDGE DURING HOURS OF DARKNESS.
9. CONTRACTOR SHALL ENSURE THAT THE SLOPE ON THE FINISHED SURFACE OF THE CONCRETE IN THE FIRST FIVE FEET OUTSIDE DOORS DOES NOT EXCEED 2%.
10. CONTRACTOR SHALL CONFORM TO THE REQUIREMENTS OF THE TxDOT PERMIT FOR ALL WORK IN THE VICINITY OF FM 11488.

DRAINAGE NOTES

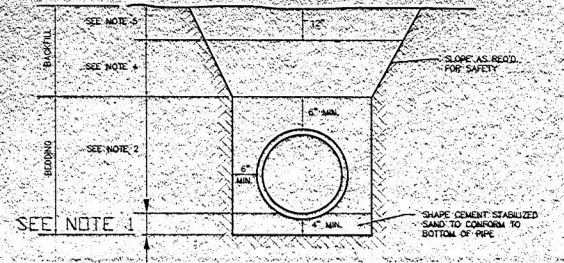
- 1. ALL PROPOSED STORM SEWER PIPE IN PUBLIC RIGHT-OF-WAY SHALL BE C-76 CLASS III REINFORCED CONCRETE PIPE.
2. ALL PROPOSED ON-SITE STORM SEWER PIPE SHALL BE SDR 26 PVC OR HANCOCK POLYETHYLENE PIPE UNLESS NOTED OTHERWISE.
3. CONTRACTOR HAS OPTION OF USING PRECAST STORM SEWER INLETS IN LIEU OF FIELD CONSTRUCTED BRICK INLETS.
4. ALL PROPOSED STORM INLETS AND MANHOLES SHALL BE BEDDED AND BACKFILLED WITH CEMENT STABILIZED SAND (1 - 1/2 SACKS OF CEMENT PER CUBIC YARD OF SAND) PLACED IN 8" LIFTS AND COMPACTED TO 95% MAXIMUM DENSITY AT OPTIMUM MOISTURE.
5. SEE STRUCTURAL DRAWINGS FOR SOIL PREPARATION REQUIREMENTS UNDER BUILDING SLABS.
6. CONTRACTOR SHALL STAKE BUILDING RADS (VERTICAL AND HORIZONTAL) AFTER CLEARING SITE FOR APPROVAL OF SUCH BY OWNER AND ARCHITECT PRIOR TO CONSTRUCTION.
7. CONTRACTOR SHALL OBTAIN PERMIT FROM EPA REGARDING STORM DISCHARGE DURING CONSTRUCTION AT NO ADDITIONAL COST TO OWNER. CONTRACTOR SHALL PREPARE PERMIT APPLICATION AND ADHERE TO ALL PERMIT REQUIREMENTS.

H&P NOTE WARNING

OVERHEAD LINES MAY EXIST ON THE PROPERTY. WE HAVE NOT ATTEMPTED TO MARK THOSE LINE SINCE THEY ARE CLEARLY VISIBLE, BUT YOU SHOULD LOCATE THEM PRIOR TO BEGINNING ANY CONSTRUCTION. TEXAS LAW SECTION 752 HEALTH & SAFETY CODE FORBIDS ALL ACTIVITIES IN WHICH PERSONS OR THINGS MAY COME WITHIN SIX (6) FEET OF LIVE OVERHEAD HIGH VOLTAGE LINES. CONTRACTORS AND OWNERS ARE LEGALLY RESPONSIBLE FOR SAFETY OF CONSTRUCTION WORKERS UNDER THIS LAW. THIS LAW CARRIES BOTH CRIMINAL AND CIVIL LIABILITY. TO ARRANGE FOR LINES TO BE TURNED OFF OR MOVED, CALL H&P AT (800) 332-7143.



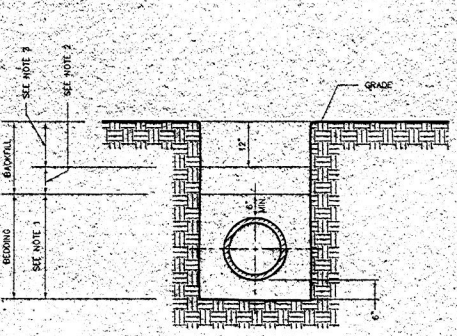
SIDEWALK DETAIL NTS



NOTES

- 1. PLACE CEMENT-STABILIZED SAND BEFORE PIPE IS LAID (7" MIN).
2. PLACE AND ROD THOROUGHLY CEMENT-STABILIZED SAND EQUALLY ON BOTH SIDES OF PIPE TO AVOID PIPE DISPLACEMENT.
3. WHERE SOIL CONDITIONS REQUIRE, THE ENGINEER MAY ORDER USE OF WASHED SILEX OR APPROVED GRANULAR MATERIAL IN LIEU OF CEMENT-STABILIZED SAND BEDDING. NO DIRECT PAYMENT FOR WASHED SILEX.
4. PROVIDE CEMENT-STABILIZED SAND BACKFILL UNDER AND OUT TO ONE-FOOT BEYOND PAVING. IN OTHER AREAS, PROVIDE EITHER CEMENT-STABILIZED SAND BACKFILL OR SELECT, COMPACTED BACKFILL PER NOTE 5.
5. COMPACT SELECT SOIL IN 8-INCH LOOSE LIFTS WITH A MINIMUM DENSITY OF 95% OF MAXIMUM DENSITY PER ASTM D-698. ADJUST SOIL MOISTURE CONTENT TO +/-2% OF OPTIMUM MOISTURE CONTENT.

CULVERT BEDDING DETAIL



NOTES

- 1. 8" MAX LOOSE LIFT SANDY SOIL COMPACTED TO 95% DENSITY PER ASTM D 698.
2. PROVIDE CEMENT-STABILIZED SAND BACKFILL TO BOTTOM OF SUBGRADE 1' BEYOND PAVING. IN OTHER AREAS, PROVIDE EITHER CEMENT-STABILIZED SAND BACKFILL OR SELECT, COMPACTED BACKFILL PER NOTE 3.
3. COMPACT SELECT SOIL IN 8-INCH LOOSE LIFTS WITH A MINIMUM DENSITY OF 95% OF MAXIMUM DENSITY PER ASTM D-698. ADJUST MOISTURE CONTENT TO +/-2% OF OPTIMUM MOISTURE CONTENT.

WATER LINE BEDDING DETAIL



APPROVED BY: MONTGOMERY COUNTY ENGINEER MARK J. MOONEY

Table with columns: NO., DATE, BY.



COLIN JAMES CUSTOM HOMES
FALLS OF WILDWOOD
CONSTRUCTION NOTES & DETAILS
MONTGOMERY COUNTY, TEXAS

Sitech ENGINEERING CORP.
The Site Technology Group
1544 SANDOZ ROAD, SUITE 100
THE WOODLANDS, TEXAS 77380
OFF. # (281) 363-4039 FAX # (281) 363-3459
e-mail: sitech@itd.com
© copyright 1998

DRAWN: S.E.C. DESIGNED: S.E.C. CHECKED: S.E.C.
PROJECT NO.: 1302-001 DWG. NAME: NOTES.DWG
DATE: 06/06/00 HORIZ. N/A
SHEET: 01/02 SCALES: 1" = 1'-0" VERT. N/A